

Time Table Effective April 24, 1966

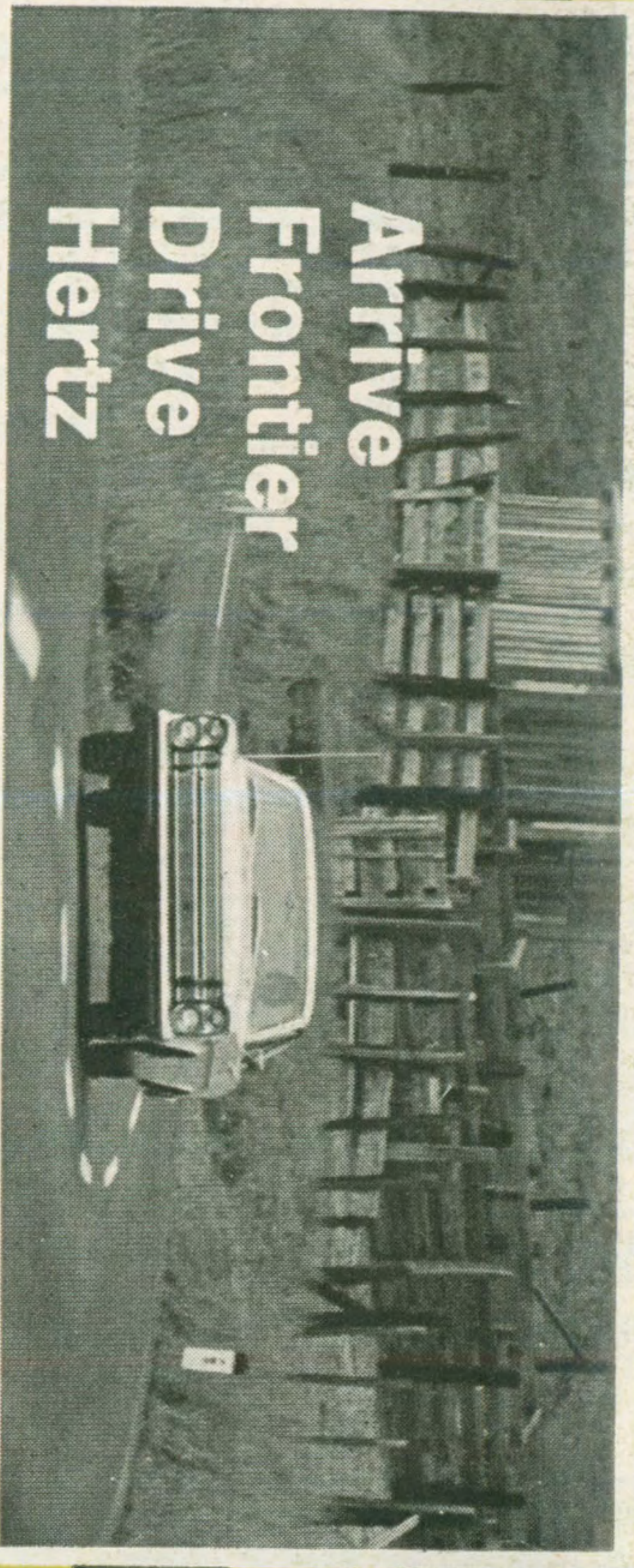
FRONTIER AIRLINES



Route of the Jet-Power 580's

Time Table Effective April 24, 1966

FRONTIER AIRLINES



Arrive
Frontier
Drive
Hertz

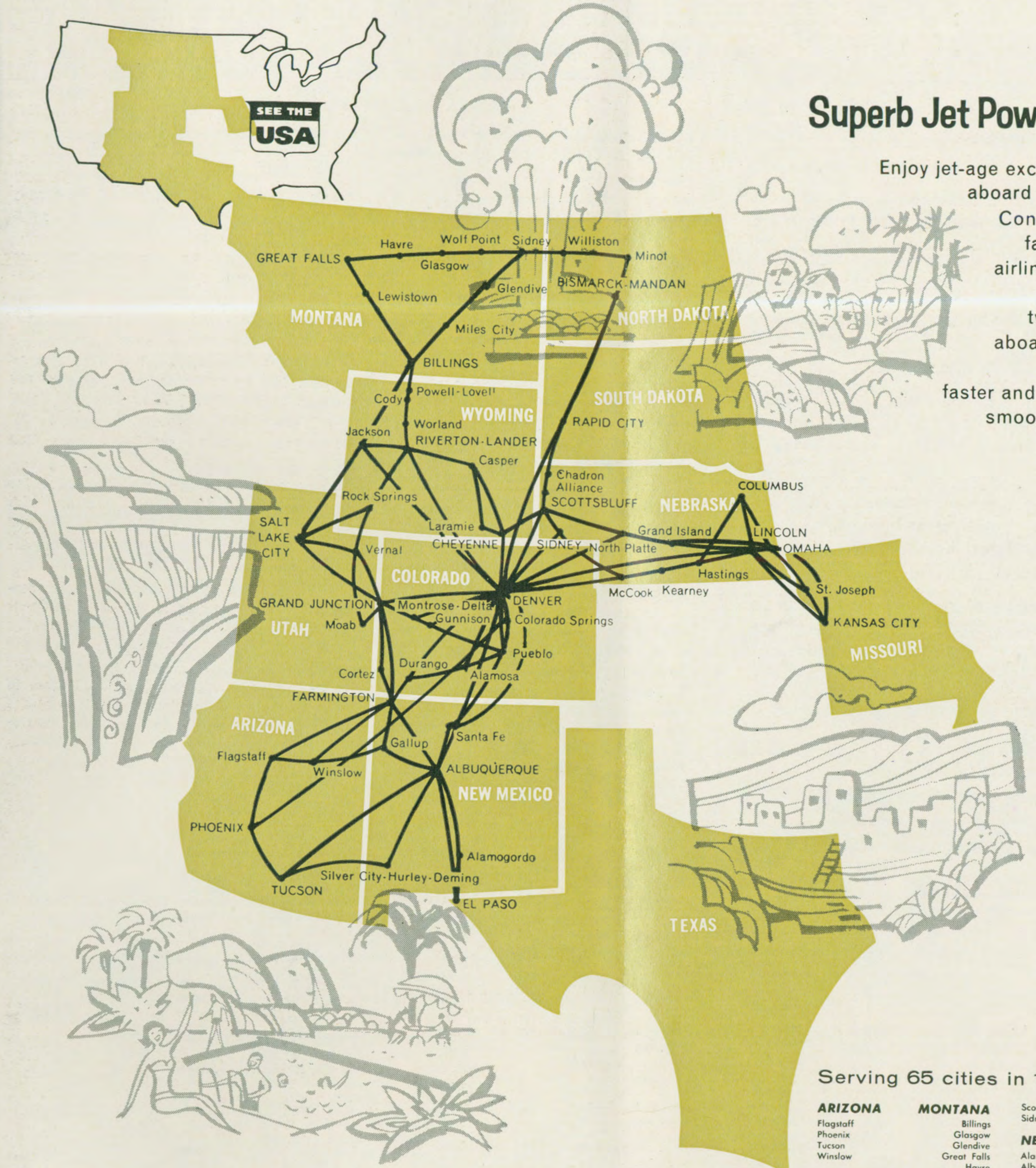
Reserve a new Hertz Ford Galaxie or other fine car to meet you when you land. Hertz features a special 7-day Free Wheeling Plan—for a fixed weekly rate you may drive a Ford Galaxie sedan or similar model car all the miles you like for one full week and return the car to almost any major city at no extra charge. With Hertz you have Certified Service—your assurance of satisfaction from the moment you make your reservation to the minute you return your car.

Let HERTZ put you in the driver's seat!

HERTZ
RENT A CAR

FRONTIER AIRLINES
5900 East 39th Avenue
Denver, Colorado 80207

Route of the Jet-Power 580's



Superb Jet Power 580 Fleet

Enjoy jet-age excellence on Frontier aboard the new Jet-Power Convair 580, America's fastest twin jet-prop airliner! Wide, comfortable, exclusively two-abreast seating aboard an airplane that flies faster, climbs faster and cruises with velvet smoothness. Already in extensive Frontier service.

Serving 65 cities in 11 scenic states

ARIZONA Flagstaff Phoenix Tucson Winslow	MONTANA Billings Glasgow Glendive Great Falls Havre Lewistown Miles City Sidney Wolf Point	Scottsbluff Sidney	TEXAS El Paso
COLORADO Alamosa Colorado Springs Cortez Delta Denver Durango Grand Junction Gunnison Montrose Pueblo	WYOMING Cody Jackson Powell-Love!! Riverton-Lander Worland	NEW MEXICO Alamogordo Albuquerque Deming Farmington Gallup Hurley Santa Fe Silver City	UTAH Salt Lake City Moab Vernal
ARIZONA Flagstaff Winslow	NEBRASKA Alliance Chadron Columbus Grand Island Hastings Kearney Lincoln McCook	N. DAKOTA Bismarck Mandan Minot Williston	WYOMING Casper Cheyenne Cody Jackson Lander Laramie Lovell Powell Riverton
MISSOURI Kansas City St. Joseph	S. DAKOTA Rapid City		Rock Springs Worland

FRONTIER AIRLINES

PRINTED IN U.S.A. BY DITTLER BROS. INC., ATLANTA, GA.

FRONTIER AIRLINES SYSTEM TIMETABLE

EFFECTIVE APRIL 24, 1966
ALL TIMES SHOWN ARE LOCAL

Leave	Arrive	Flight	Freq.	Stops	Leave	Arrive	Flight	Freq.	Stops	Leave	Arrive	Flight	Freq.	Stops	Leave	Arrive	Flight	Freq.	Stops																														
FROM ALBUQUERQUE, N. M. CONTINUED					FROM ALLIANCE, NEBR. (MST) Reservations 762-5100					ALAMOSA, COLO. \$25.00					GALLUP, N. M. (MST) \$23.00																																		
TO MOAB, UTAH \$30.00					TO CHADRON, NEBR. \$ 9.00					ALBUQUERQUE, N. M. (MST) \$30.00					GREAT FALLS, MONT. (MST) \$60.00																																		
7 40	1 56	512/573	2	2	11 26	11 55	42	0	0	8 20	10 00	511	3	3	10 27	11 37	512	4	4	8 20	9 22	511	2	2	10 27	11 55	516	7	7																				
7 15	9 26	514	2	2	10 26	10 55	48	0	0	1 56	2 31	517	1	1	8 39	9 20	515	1	1	8 39	10 40	515/518	2	2	10 35	11 18	572	1	1	10 35	11 30	512	1	1	10 35	11 18	572	1	1	10 35	11 30	512	1	1					
MONTROSE, COLO. (MDT) \$34.00					CHEYENNE, WYO. \$15.00					BILLINGS, MONT. (MST) \$59.00					GUNNISON, COLO. \$13.00																																		
7 40	10 53	512/572	2	2	6 13	7 18	41	1	1	10 27	12 23	512	2	2	10 35	11 18	572	1	1	10 35	11 18	572	1	1	10 35	11 18	572	1	1	10 35	11 18	572	1	1	10 35	11 18	572	1	1	10 35	11 18	572	1	1					
4 30	8 58	516/576	2	2	5 53	9 11	45/48	3	3	7 01	10 37	516	2	2	10 35	11 18	572	1	1	10 35	11 18	572	1	1	10 35	11 18	572	1	1	10 35	11 18	572	1	1	10 35	11 18	572	1	1	10 35	11 18	572	1	1					
OMAHA, NEBR. (CST) \$69.00					COLORADO SPRINGS, COLO. (MDT) \$27.00					BISMARCK, N.D. (CST) \$69.00					JACKSON, WYO. (MST) \$39.00																																		
30 Day Round Trip Fare					6 13	1 07	41/507	3	3	10 35	2 42	572/508	4	4	10 27	11 30	512	1	1	10 27	11 30	512	1	1	10 27	11 30	512	1	1	10 27	11 30	512	1	1	10 27	11 30	512	1	1	10 27	11 30	512	1	1					
8 45	3 11	582/566	6	6	5 53	10 27	45/593	3	3	6 25	10 52	574/510	3	3	10 27	11 30	512	1	1	10 27	11 30	512	1	1	10 27	11 30	512	1	1	10 27	11 30	512	1	1	10 27	11 30	512	1	1	10 27	11 30	512	1	1	10 27	11 30	512	1	1
3 40	10 02	592/564	6	6	DENVER, COLO. (MDT) \$22.00					CHEYENNE, WYO. (MST) \$29.00					KANSAS CITY, MO./KAN. (CST) \$64.00																																		
8 45	3 11	582/566	6	6	6 13	9 05	41	2	2	10 35	12 41	572/6	3	3	8 10	1 55	570/552	6	6	10 27	1 06	512	3	3	10 35	2 55	572/560	4	4	10 27	1 06	512	3	3	10 27	1 06	512	3	3	10 27	1 06	512	3	3	10 27	1 06	512	3	3
3 40	10 02	592/564	6	6	5 53	8 44	45	2	2	6 25	9 11	574/48	2	2	10 35	2 55	572/560	4	4	10 27	1 06	512	3	3	10 27	1 06	512	3	3	10 27	1 06	512	3	3	10 27	1 06	512	3	3	10 27	1 06	512	3	3					
PHOENIX, ARIZ. \$28.10					GRAND ISLAND, NEBR. (CST) \$26.00					LEWISTOWN, MONT. (MST) \$59.00					LINCOLN, NEBR. (CST) \$51.00																																		
30 Day Round Trip Fare					6 13	9 10	41/562	2	2	10 27	11 23	516	6	6	8 10	12 20	570/552	3	3	10 35	2 02	572/560	3	3	10 35	2 02	572/560	3	3	10 35	2 02	572/560	3	3	10 35	2 02	572/560	3	3	10 35	2 02	572/560	3	3					
8 45	3 11	582/566	6	6	5 53	8 56	45/564	2	2	10 27	11 23	516	6	6	8 10	12 20	570/552	3	3	10 35	2 02	572/560	3	3	10 35	2 02	572/560	3	3	10 35	2 02	572/560	3	3	10 35	2 02	572/560	3	3	10 35	2 02	572/560	3	3					
3 40	10 02	592/564	6	6	JACKSON, WYO. \$39.00					LINCOLN, NEBR. (CST) \$51.00					MOAB, UTAH (MST) \$10.00																																		
8 45	3 11	582/566	6	6	6 13	3 40	41/526	3	3	8 10	12 20	570/552	3	3	8 20	7 41	511	0	0	10 35	2 02	572/560	3	3	8 20	7 41	511	0	0	10 35	2 02	572/560	3	3	10 35	2 02	572/560	3	3										
3 40	10 02	592/564	6	6	6 13	12 17	41/530	3	3	8 10	12 20	570/552	3	3	8 20	7 41	511	0	0	10 35	2 02	572/560	3	3	8 20	7 41	511	0	0	10 35	2 02	572/560	3	3	10 35	2 02	572/560	3	3										
30 Day Round Trip Fare \$116.30					USE FRONTIER'S					OMAHA, NEBR. (CST) \$54.00					MONTROSE, COLO. \$ 9.00																																		
8 45	3 11	582/566	6	6	deferred credit plan allowing charges up to \$750 (more can be charged with approval) and up to 12 months to pay. Use your Frontier Airlines travel card—and charge air travel.					8 10	12 48	570/552	4	4	10 35	10 53	572	0	0	10 35	10 53	572	0	0	10 35	10 53	572	0	0	10 35	10 53	572	0	0															
3 40	10 02	592/564	6	6	up to \$750 (more can be charged with approval) and up to 12 months to pay. Use your Frontier Airlines travel card—and charge air travel.					8 10	12 48	570/552	4	4	6 25	6 43	574	0	0	6 25	6 43	574	0	0	6 25	6 43	574	0	0	6 25	6 43	574	0	0															
30 Day Round Trip Fare \$116.30					DEFERRED CREDIT PLAN					PHOENIX, ARIZ. (MST) \$45.00					OMAHA, NEBR. (CST) \$54.00																																		
8 45	3 11	582/566	6	6	Service to Cortez is Temporarily Suspended Due to Runway Construction. Service is Expected to Resume Approximately June 15.					8 20	10 35	511/519	4	4	8 10	12 48	570/552	4	4	10 35	10 53	572	0	0	10 35	10 53	572	0	0	10 35	10 53	572	0	0															
3 40	10 02	592/564	6	6	CORTEZ, COLO. \$14.00					ROCK SPRINGS, WYO. \$61.00					PHOENIX, ARIZ. (MST) \$45.00																																		
8 45	3 11	582/566	6	6	Service to Cortez is Temporarily Suspended Due to Runway Construction. Service is Expected to Resume Approximately June 15.					4 30	8 19	516	3	3	8 20	10 35	511/519	4	4	8 20	10 35	511/519	4	4	8 20	10 35	511/519	4	4	8 20	10 35	511/519	4	4															
30 Day Round Trip Fare \$116.30					DEFERRED CREDIT PLAN					ROCK SPRINGS, WYO. \$61.00					PHOENIX, ARIZ. (MST) \$45.00																																		
8 45	3 11	582/566	6	6	Service to Cortez is Temporarily Suspended Due to Runway Construction. Service is Expected to Resume Approximately June 15.					4 30	8 19	516	3	3	8 20	10 35	511/519	4	4	8 20	10 35	511/519	4	4	8 20	10 35	511/519	4	4	8 20	10 35	511/519	4	4															
3 40	10 02	592/564	6	6	CORTEZ, COLO. \$14.00					ROCK SPRINGS, WYO. \$61.00					PHOENIX, ARIZ. (MST) \$45.00																																		
8 45	3 11	582/566	6	6	Service to Cortez is Temporarily Suspended Due to Runway Construction. Service is Expected to Resume Approximately June 15.					4 30	8 19	516	3	3	8 20	10 35	511/519	4	4	8 20	10 35	511/519	4	4	8 20	10 35	511/519	4	4	8 20	10 35	511/519	4	4															
30 Day Round Trip Fare \$116.30					DEFERRED CREDIT PLAN					ROCK SPRINGS, WYO. \$61.00					PHOENIX, ARIZ. (MST) \$45.00																																		
8 45	3 11	582/566	6	6	Service to Cortez is Temporarily Suspended Due to Runway Construction. Service is Expected to Resume Approximately June 15.					4 30	8 19	516	3	3	8 20	10 35	511/519	4	4	8 20	10 35	511/519	4	4	8 20	10 35	511/519	4	4	8 20	10 35	511/519	4	4															
3 40	10 02	592/564	6	6	CORTEZ, COLO. \$14.00					ROCK SPRINGS, WYO. \$61.00					PHOENIX, ARIZ. (MST) \$45.00																																		
8 45	3 11	582/566	6	6	Service to Cortez is Temporarily Suspended Due to Runway Construction. Service is Expected to Resume Approximately June 15.					4 30	8 19	516	3	3	8 20	10 35	511/519	4	4	8 20	10 35	511/519	4	4	8 20	10 35	511/519	4	4	8 20	10 35	511/519	4	4															
30 Day Round Trip Fare \$116.30					DEFERRED CREDIT PLAN					ROCK SPRINGS, WYO. \$61.00					PHOENIX, ARIZ. (MST) \$45.00																																		
8 45	3 11	582/566	6	6	Service to Cortez is Temporarily Suspended Due to Runway Construction. Service is Expected to Resume Approximately June 15.					4 30	8 19	516	3	3	8 20	10 35	511/519	4	4	8 20	10 35	511/519	4	4	8 20	10 35	511/519	4	4	8 20	10 35	511/519	4	4															
3 40	10 02	592/564	6	6	CORTEZ, COLO. \$14.00					ROCK SPRINGS, WYO. \$61.00					PHOENIX, ARIZ. (MST) \$45.00																																		
8 45	3 11	582/566	6	6	Service to Cortez is Temporarily Suspended Due to Runway Construction. Service is Expected to Resume Approximately June 15.					4 30	8 19	516	3	3	8 20	10 35	511/519	4	4	8 20	10 35	511/519	4	4	8 20	10 35	511/519	4	4	8 20	10 35	511/519	4	4															
30 Day Round Trip Fare \$116.30					DEFERRED CREDIT PLAN					ROCK SPRINGS, WYO. \$61.00					PHOENIX, ARIZ. (MST) \$45.00																																		
8 45	3 11	582/566	6	6	Service to Cortez is Temporarily Suspended Due to Runway Construction. Service is Expected to Resume Approximately June 15.					4 30	8 19	516	3	3	8 20	10 35	511/519	4	4	8 20	10 35	511/519	4	4	8 20	10 35	511/519	4	4	8 20	10 35	511/519	4	4															
3 40	10 02	592/564	6	6	CORTEZ, COLO. \$14.00					ROCK SPRINGS, WYO. \$61.00					PHOENIX, ARIZ. (MST) \$45.00																																		
8 45	3 11	582/566	6	6	Service to Cortez is Temporarily Suspended Due to Runway Construction. Service is Expected to Resume Approximately June 15.					4 30	8 19	516	3	3	8 20	10 35	511/519	4	4	8 20	10 35	511/519	4	4	8 20	10 35	511/519	4	4	8 20	10 35	511/519	4	4															
30 Day Round Trip Fare \$116.30					DEFERRED CREDIT PLAN					ROCK SPRINGS, WYO. \$61.00					PHOENIX, ARIZ. (MST) \$45.00																																		
8 45	3 11	582/566	6	6	Service to Cortez is Temporarily Suspended Due to Runway Construction. Service is Expected to Resume Approximately June 15.					4 30	8 19	516	3	3	8 20	10 35	511/519	4	4	8 20	10 35	511/519	4	4	8 20	10 35	511/519	4	4	8 20	10 35	511/519	4	4															
3 40	10 02	592/564	6	6	CORTEZ, COLO. \$14.00					ROCK SPRINGS, WYO. \$61.00					PHOENIX, ARIZ. (MST) \$45.00																																		
8 45	3 11	582/566	6	6	Service to Cortez is Temporarily Suspended Due to Runway Construction. Service is Expected to Resume Approximately June 15.					4 30	8 19	516	3	3	8 20	10 35	511/519	4	4	8 20	10 35	511/519	4	4	8 20	10 35	511/519	4	4	8 20	10 35	511/519	4	4															
30 Day Round Trip Fare \$116.30					DEFERRED CREDIT PLAN					ROCK SPRINGS, WYO. \$61.00					PHOENIX, ARIZ. (MST) \$45.00																																		
8 45	3 11	582/566	6	6	Service to Cortez is Temporarily Suspended Due to Runway Construction. Service is Expected to Resume Approximately June 15.					4 30	8 19	516	3	3	8 20	10 35	511/519	4	4	8 20	10 35	511/519	4	4	8 20	10 35	511/519	4	4	8 20	10 35	511/519	4	4															
3 40	10 02	592/564	6	6	CORTEZ, COLO. \$14.00					ROCK SPRINGS, WYO. \$61.00					PHOENIX, ARIZ. (MST) \$45.00																																		
8 45	3 11	582/566	6	6	Service to Cortez is Temporarily Suspended Due to Runway Construction. Service is Expected to Resume Approximately June 15.					4 30	8 19	516	3	3	8 20	10 35	511/519	4	4	8 20	10 35	511/519	4	4	8 20	10 35	511/519	4	4	8 20	10 35	511/519	4	4															
30 Day Round Trip Fare \$116.30					DEFERRED CREDIT PLAN					ROCK SPRINGS, WYO. \$61.00					PHOENIX, ARIZ. (MST) \$45.00																																		
8 45	3 11	582/566	6	6	Service to Cortez is Temporarily Suspended																																												


FRONTIER AIRLINES SYSTEM TIMETABLE

EFFECTIVE APRIL 24, 1966
ALL TIMES SHOWN ARE LOCAL

Leave	Arrive	Flight	Freq.	Stops	Leave	Arrive	Flight	Freq.	Stops	Leave	Arrive	Flight	Freq.	Stops	Leave	Arrive	Flight	Freq.	Stops
FROM EL PASO, TEX. CONTINUED					DENVER, COLO. (MDT) \$30.00					SALT LAKE CITY, UTAH \$34.00					DURANGO, COLO. (MDT) \$26.00				
TO					8 45 11 00 508 1					8 40 10 18 512 1					7 30 10 01 508 1				
SALT LAKE CITY, UTAH \$64.40					3 00 6 50 18 4					5 15 6 52 516 1					7 25 10 06 518 2				
30 Day Round Trip Fare \$94.00					8 50 11 29 518 2					8 45 11 01 514/577 2					Via Conn. Grand Junction				
6 05 10 18 512 4					DURANGO, COLO. (MDT) \$ 8.00					SANTA FE, N.M. \$22.00					EL PASO, TEXAS \$43.00				
2 15 6 52 592/516 4					8 45 10 01 508 0					1 55 3 59 517/592 1					7 30 12 28 508/511/591 3				
Via Conn. Albuquerque					3 00 4 23 18 0					Via Conn. Albuquerque					Via Conn. Farmington-Albuquerque				
5 50 11 01 514/577 6					8 50 10 06 518 0					Via Conn. Albuquerque					12 45 3 57 588/517 3				
Via Conn. Grand Junction					EL PASO, TEX. \$38.00					SILVER CITY, N.M. \$31.00					7 25 10 57 518/515 4				
SANTA FE, N.M. \$28.00					8 55 12 28 511/591 2					8 55 11 28 511 2					DENVER, COLO. (MDT) \$36.00				
6 05 9 04 512/582 2					Via Conn. Albuquerque					8 44 10 28 515/583 1					1 42 6 10 588/592 2				
Via Conn. Albuquerque					1 55 3 57 517 3					Via Conn. Albuquerque					Via Conn. Farmington				
2 15 3 59 592 2					8 44 10 57 515 2					TUCSON, ARIZ. \$40.00					7 55 11 29 514/518 3				
WILLISTON, N.D. (CST) \$117.00					FLAGSTAFF, ARIZ. \$23.00					8 45 11 41 519 3					FARMINGTON, N.M. \$23.00				
30 Day Round Trip Fare \$168.00					8 45 9 57 519 1					7 30 8 22 508 0					7 30 8 22 508 0				
2 15 12 19 592/510 7					1 55 4 22 517/589 3					8 44 10 16 509 2					7 25 8 30 518 1				
Via Conn. Denver					Via Conn. Albuquerque					GALLUP, N.M. \$17.00					DURANGO, COLO. (MDT) \$14.00				
WINSLOW, ARIZ. \$39.00					8 40 9 39 509 0					7 30 9 22 508/511 1					7 55 10 06 514/518 1				
6 05 9 31 512/519 3					1 55 3 20 517/589 1					12 45 1 37 588 1					Via Conn. Farmington				
Via Conn. Farmington					GALLUP, N.M. \$12.00					GRAND JUNCTION, COLO. (MDT) \$35.00					EL PASO, TEX. \$30.00				
FROM FARMINGTON, N. M. (MST)					8 55 9 22 511 0					7 30 10 19 508/512 1					1 42 3 57 588/517 2				
Reservations 325-3511					1 55 3 20 517/589 1					12 45 6 54 588/516 4					7 55 10 57 514/515 3				
Air Cargo 325-0681					Via Conn. Albuquerque					7 25 10 50 518/514 3					Via Conn. Farmington				
TO					GREAT FALLS, MONT. \$71.00					JACKSON, WYO. \$67.00					FLAGSTAFF, ARIZ. \$17.00				
ALAMOGORDO, N.M. \$33.00					8 40 1 37 512 5					7 30 11 30 508/512 3					3 25 4 22 589 1				
8 55 12 00 511/591 1					5 15 11 55 516 8					Via Conn. Farmington					7 55 9 39 514/509 1				
Via Conn. Albuquerque					JACKSON, WYO. \$50.00					KANSAS CITY, MO./KAN. (CST) \$89.00					GRAND JUNCTION, COLO. (MDT) \$23.00				
1 55 3 30 517 1					8 40 11 30 512 2					7 30 2 55 508/560 4					1 42 6 54 588/516 2				
8 44 10 30 515 1					3 00 12 19 18/510 7					Via Conn. Denver					Via Conn. Albuquerque				
ALAMOSA, COLO. (MDT) \$15.00					KANSAS CITY, MO./KAN. (CST) \$69.00					PHOENIX, ARIZ. \$14.00					7 55 10 50 514 2				
3 00 5 14 18 2					8 45 2 55 508/560 3					10 04 10 35 519 0					PHOENIX, ARIZ. \$25.00				
8 50 10 40 518 1					Via Conn. Denver					4 29 5 00 589 0					9 27 12 55 511 3				
ALBUQUERQUE, N.M. \$18.00					3 00 9 20 18/568 5					Via Conn. Albuquerque					3 25 5 00 589 2				
8 55 10 00 511 0					LEWISTOWN, MONT. \$70.00					WORLDAND, WYO. \$58.00					7 55 10 16 514/509 2				
1 55 2 31 517 0					8 40 1 06 512 4					5 15 9 40 516 4					Via Conn. Farmington				
8 44 9 20 515 0					5 15 11 23 516 7					FROM FLAGSTAFF, ARIZ. (MST)					SALT LAKE CITY, UTAH \$40.00				
ASPER, COLO. (MDT) \$17.00					MINOT, N.D. (CST) \$84.00					Reservations 774-6601					1 42 6 52 588/516 3				
Served Through Grand Junction					8 45 3 32 508 4					TO					7 55 11 01 514/577 4				
8 40 10 19 512 0					3 00 11 37 18/510 6					ALBUQUERQUE, N.M. \$26.00					TUCSON, ARIZ. \$23.00				
5 15 6 54 516 0					MOAB, UTAH \$17.00					7 30 10 00 508/511 2					10 04 11 41 519 1				
8 45 10 50 514 1					8 40 1 56 512/573 1					Via Conn. Farmington					4 29 6 11 589/586 1				
BILLINGS, MONT. \$66.00					8 45 9 26 514 0					12 45 2 15 588 2					7 55 11 16 514/509 3				
8 40 12 23 512 3					MONTROSE, COLO. (MDT) \$20.00					7 25 9 20 518/515 2					WINSLOW, ARIZ. \$ 8.00				
5 15 10 37 516 6					8 40 10 53 512/572 1					Via Conn. Phoenix					12 45 1 04 588 0				
BISMARCK, N.D. (CST) \$77.00					5 15 8 58 516/576 1					ASPEN, COLO. (MDT) \$35.00					7 25 7 44 518 0				
8 45 2 42 508 3					PHOENIX, ARIZ. \$31.00					Served Through Grand Junction					FROM GALLUP, N.M. (MST)				
CASPER, WYO. \$50.00					8 45 10 35 519 2					7 30 10 19 508/512 1					Reservations 863-3312				
8 45 2 38 508/526 3					1 55* 5 00 517/589 4					Via Conn. Farmington					TO				
Via Conn. Denver					8 40 10 16 509 1					12 45 6 54 588/516 4					ALAMOGORDO, N. M. \$25.00				
CODY-POWELL, WYO. \$66.00					POWELL-CODY, WYO. \$66.00					7 25 10 50 518/514 3					9 27 12 28 511/591 1				
5 15 10 10 516 P 5					5 15 10 10 516 P 5					BISMARCK, N. D. (CST) \$95.00					30 Day Round Trip Fare \$142.00				
COLORADO SPRINGS, COLO. (MDT) \$25.00					PUEBLO, COLO. (MDT) \$22.00					7 30 2 42 508 4					11 21 9 20 33/515 8				
8 45 1 07 508/507 2					3 00 6 00 18 2					CORTEZ, COLO. (MDT) \$26.00					Via Conn. Great Falls				
Via Conn. Denver					RAPID CITY, S.D. \$57.00					Service to Cortez is Temporarily Suspended					BILLINGS, MONT. \$26.00				
2 30 8 10 18/95 5					8 45 12 41 508 2					Due to Runway Construction.					11 21 3 05 33/515 3				
Via Conn. Denver					3 00 8 51 18/510 4					Service is Expected to Resume					Via Conn. Great Falls				
CORTEZ, COLO. (MDT) \$ 8.00					RIVERTON, WYO. \$53.00					Approximately June 15.					BISMARCK, N.D. (CST) \$30.00				
Service to Cortez is Temporarily Suspended					5 15 8 54 516 3					DENVER, COLO. (MDT) \$47.00					4 23 8 52 34 4				
Due to Runway Construction.					ROCK SPRINGS, WYO. \$48.00					7 30 11 00 508 2					TO				
Service is Expected to Resume					5 15 8 19 516 2					12 45* 6 10 588/592 4					ALBUQUERQUE, N. M. \$14.00				
Approximately June 15.										7 25 11 29 518 4					9 27 10 00 511 0				

FRONTIER AIRLINES SYSTEM TIMETABLE

EFFECTIVE APRIL 24, 1966
ALL TIMES SHOWN ARE LOCAL

Leave	Arrive	Flight	Freq.	Stops	Leave	Arrive	Flight	Freq.	Stops	Leave	Arrive	Flight	Freq.	Stops	Leave	Arrive	Flight	Freq.	Stops
FROM GALLUP, N. M. CONTINUED					DENVER, COLO. (MDT) \$65.00					CHEYENNE, WYO. (MST) \$30.00					ALBUQUERQUE, N. M. (MST) \$30.00				
TO					11 21 11 58 33/515/23/521 9					9 52 12 41 561/6 3					8 20 10 00 511 3				
ASPER, COLO. (MDT) \$23.00					Via Conn. Great Falls-Billings-Riverton					Via Conn. Denver					1 56 2 31 517 1				
Served Through Grand Junction					GREAT FALLS, MONT. \$23.00					DENVER, COLO. (MDT) \$30.00					8 39 9 20 515 1				
1 42 6 54 588/516 2					11 21 1 11 33 1					9 52 12 04 561 2					BILLINGS, MONT. (MST) \$59.00				
Via Conn. Albuquerque					HAVRE, MONT. \$16.00					4 23 6 05 567 1					10 27 12 23 512 2				
7 55 10 50 514 2					11 21 12 24 33 0					9 03 11 15 563 2					7 01 10 37 516 5				
DENVER, COLO. (MDT) \$36.00					MINOT, N.D. (CST) \$24.00					JACKSON, WYO. (MST) \$59.00					BISMARCK N.D. (CST) \$69.00				
1 42 6 10 588/592 2					4 23 8 01 34 3					9 52 3 40 561/526 5					10 35 2 42 572/508 4				
Via Conn. Farmington					PHOENIX, ARIZ. \$103.00					Via Conn. Denver					Via Conn. Denver				
7 55 11 29 514/518 3					30 Day Round Trip Fare \$155.00					Discontinued After May 31					6 25 10 52 574/510 3				
DURANGO, COLO. (MDT) \$14.00					11 21 10 16 33/515/509 9					Via Conn. Denver					Via Conn. Denver				
7 55 10 06 514/518 1					Via Conn. Great Falls-Farmington					Effective June 1					CHEYENNE, WYO. (MST) \$29.00				
Via Conn. Farmington					SALT LAKE CITY, UTAH \$53.00					KANSAS CITY, MO./KAN. \$24.00					10 35 12 41 572/6 3				
1 42 3 57 588/517 2					11 21 5 05 33/515 5					9 17 11 09 562 2					6 25 9 11 574/48 2				
Via Conn. Albuquerque					Via Conn. Great Falls					9 03 11 06 564 3					Via Conn. Denver				
7 55 10 57 514/515 3					SIDNEY, MONT. \$14.00					LINCOLN, NEBR. \$11.00					CODY-POWELL, WYO. (MST) \$54.00				
Via Conn. Farmington					4 23 5 21 34 1					9 17 9 41 562 0					7 01 10 10 516 P 4				
FARMINGTON, N. M. \$12.00					WILLISTON, N.D. (CST) \$16.00					NORTH PLATTE, NEBR. \$14.00					 MILITARY FARE 50% discount military fare — members of the Armed Forces, in uniform and on authorized leave, receive discounts of approximately 50% on Frontier. Once accommodated, you will not be removed at intermediate stops.				
1 42 5 08 588/516 1					4 23 7 08 34 2					9 52 10 26 561 0									
Via Conn. Albuquerque					FROM GLENDIVE, MONT. (MST)					OMAHA, NEBR. \$14.00									
7 55 9 20 514 0					Reservations 365-3146					9 17 10 16 562 1									
FLAGSTAFF, ARIZ. \$17.00					TO					9 29 3 11 566 0									
3 25 4 22 589 1					BILLINGS, MONT. \$20.00					9 03 10 02 564 1									
7 55 9 39 514/509 1					10 27 12 00 31 1					PHOENIX, ARIZ. (MST) \$78.00									
Via Conn. Farmington					30 Day Round Trip Fare \$174.00					9 52 2 27 561/507 4									
GRAND JUNCTION, COLO. (MDT) \$23.00					BISMARCK, N.D. (CST) \$26.00					4 23 10 16 567/509 5									
1 42 6 54 588/516 2					5 11 8 52 32/34 3					Via Conn. Denver									
Via Conn. Albuquerque					Via Conn. Sidney					RAPID CITY, S.D. (MST) \$37.00									
7 55 10 50 514 2					GREAT FALLS, MONT. \$35.00					9 52 12 37 561/42 4									
PHOENIX, ARIZ. \$25.00					10 27 1 37 31/512 3					Via Conn. Scottsbluff									
9 27 12 55 511 3					Via Conn. Billings					4 23 8 51 567/510 2									
3 25 5 00 589 2					LEWISTOWN, MONT. \$27.00					Via Conn. Denver									
7 55 10 16 514/509 2					10 27 1 06 31/512 2					9 03 11 37 563/48 4									
Via Conn. Farmington					Via Conn. Billings					ST. JOSEPH, MO. \$21.00									
SALT LAKE CITY, UTAH \$40.00					MILES CITY, MONT. \$11.00					9 03 10 40 564 2									
1 42 6 52 588/516 3					10 27 11 01 31 0					SCOTT'SBLUFF, NEBR. (MST) \$26.00									
Via Conn. Albuquerque					MINOT, N.D. (CST) \$21.00					9 52 10 12 561 1									
7 55 11 01 514/577 3					5 11 8 01 32/34 2					9 03 9 23 563 1									
Via Conn. Grand Junction					Via Conn. Sidney					TUCSON, ARIZ. (MST) \$84.00									
TUCSON, ARIZ. \$34.00					SIDNEY, MONT. \$ 9.00					30 Day Round Trip Fare \$127.00									
9 27 12 15 511 2					5 11 5 35 32 0					9 52 3 21 561/507 5									
3 25 6 11 589/586 3					Via Conn. Farmington					Via Conn. Denver									
7 55 11 16 514/509 3					WILLISTON, N.D. (CST) \$11.00					4 23 11 16 567/509 6									
WINSLOW, ARIZ. \$13.00					5 11 7 08 32/34 1					Via Conn. Scottsbluff									
3 25 3 56 589 0					Via Conn. Sidney					FROM GRAND ISLAND, NEBR. (CST)									
FROM GLASGOW, MONT. (MST)					Reservations 228-2446					Reservations 382-2750									
TO					ALBUQUERQUE, N. M. \$94.00					TO									
30 Day Round Trip Fare \$142.00					11 21 9 20 33/515 8					ALLIANCE, NEBR. (MST) \$26.00									
Via Conn. Great Falls					BILLINGS, MONT. \$26.00					9 52 11 24 561/42 2									
11 21 3 05 33/515 3					Via Conn. Great Falls					Via Conn. Scottsbluff									
BISMARCK, N.D. (CST) \$30.00					4 23 8 52 34 4					9 03 10 24 563/48 2									
Via Conn. Farmington					TO					Via Conn. Scottsbluff									
ALAMOGORDO, N. M. (MST) \$44.00					8 20 12 00 511/591 4					Via Conn. Albuquerque									
30 Day Round Trip Fare \$142.00					1 56 3 30 517 2					Via Conn. Denver									
Via Conn. Albuquerque					8 39 10 30 515 2					Via Conn. Farmington									
FARMINGTON, N. M. (MST) \$17.00					8 20 8 25 511 1					Via Conn. Farmington									
8 20 8 25 511 1					Via Conn. Farmington					ALAMOSA, COLO. \$25.00									
1 56 1 37 517 0					Via Conn. Farmington					1 56 5 14 517/18 2									
8 39 8 20 515 0					Via Conn. Farmington					8 39 10 40 515/518 2									
FLAGSTAFF, ARIZ. (MST) \$35.00					8 20 9 57 511/519 3					Via Conn. Farmington									
8 20 9 57 511/519 3					Via Conn. Farmington					8 39 9 39 515/509 1									
Via Conn. Farmington																			

FRONTIER AIRLINES SYSTEM TIMETABLE

EFFECTIVE APRIL 24, 1966
ALL TIMES SHOWN ARE LOCAL

Leave	Arrive	Flight	Freq.	Stops	Leave	Arrive	Flight	Freq.	Stops	Leave	Arrive	Flight	Freq.	Stops	Leave	Arrive	Flight	Freq.	Stops
FROM GRAND JUNCTION, COLO. CONTINUED					TUCSON, ARIZ. (MST) \$53.00					JACKSON, WYO. \$35.00					FROM GUNNISON, COLO. (MDT) Reservations 641-1080				
TO					VERNAL, UTAH (MST) \$13.00					KANSAS CITY, MO./KAN. (CST) \$78.00					TO ASPEN, COLO. \$13.00				
GALLUP, N. M. (MST) \$23.00					WORLAND, WYO. (MST) \$49.00					LEWISTOWN, MONT. \$11.00					Served Through Grand Junction				
8 20 9 22 511 2					7 01 9 40 516 3					6 00 2 55 517/501/560 10					1 35 2 19 573 1				
1 56 3 20 517/589 2					2 35 2 34 573 1					Via Conn. Riverton-Denver					Via Conn. Denver				
Via Conn. Albuquerque					2 35 2 34 573 1					6 00 2 55 517/501/560 10					1 35 2 19 573 1				
GREAT FALLS, MONT. (MST) \$60.00					FROM GREAT FALLS, MONT. Reservations 453-4844 (MST)					LINCOLN, NEBR. (CST) \$64.00					BISMARCK, N.D. (CST) \$68.00				
10 27 1 37 512 4					TO					MILES CITY, MONT. \$28.00					COLORADO SPRINGS, COLO. \$17.00				
7 01 11 55 516 7					ALAMOGORDO, N.M. \$97.00					MINOT, N.D. (CST) \$39.00					11 23 1 07 572/507 1				
GUNNISON, COLO. \$13.00					ALBUQUERQUE, N.M. \$84.00					OMAHA, NEBR. (CST) \$67.00					11 23 2 42 572/508 2				
10 35 11 18 572 1					30 Day Round Trip Fare \$137.00					6 00 3 11 517/501/566 11					11 23 2 42 572/508 2				
JACKSON, WYO. (MST) \$39.00					6 00 2 31 517 9					PHOENIX, ARIZ. \$93.00					DENVER, COLO. \$15.00				
10 27 11 30 512 1					2 10 9 20 515 6					30 Day Round Trip Fare \$145.00					11 23 11 58 572 0				
KANSAS CITY, MO./KAN. (CST) \$64.00					ASPEN, COLO. (MDT) \$60.00					PHOENIX, ARIZ. \$93.00					GRAND JUNCTION, COLO. \$13.00				
8 10 1 55 570/552 6					Served Through Grand Junction					30 Day Round Trip Fare \$145.00					1 35 2 19 573 1				
Via Conn. Denver					6 00 1 49 517 7					6 00 2 27 517/501/507 10					MOAB, UTAH (MST) \$18.00				
10 35 2 55 572/560 4					2 10 8 19 515 4					Via Conn. Riverton-Denver					1 35 1 56 573 2				
Via Conn. Denver					BILLINGS, MONT. \$16.00					PHOENIX, ARIZ. \$93.00					MONTROSE, COLO. \$9.00				
LEWISTOWN, MONT. (MST) \$59.00					6 00 6 55 517 1					30 Day Round Trip Fare \$145.00					1 35 1 54 573 0				
10 27 1 06 512 3					2 10 3 05 515 1					6 00 2 27 517/501/507 10					PHOENIX, ARIZ. \$49.00				
7 01 11 23 516 6					BISMARCK, N.D. (CST) \$45.00					Via Conn. Riverton-Denver					11 23 2 27 572/507 2				
LINCOLN, NEBR. (CST) \$51.00					2 25 8 52 34 6					ROCK SPRINGS, WYO. \$42.00					SALT LAKE CITY, UTAH (MST) \$29.00				
8 10 12 20 570/552 3					CHEYENNE, WYO. \$49.00					6 00 9 39 517 5					1 35 3 15 573 4				
Via Conn. Denver					6 00 10 29 517/501 7					2 10 10 08 515/23 5					VERNAL, UTAH (MST) \$20.00				
10 35 2 02 572/560 3					Via Conn. Riverton					Via Conn. Billings					1 35 2 34 573 3				
Via Conn. Denver					2 10 10 25 515/23/521 6					RIVERTON, WYO. \$35.00					FROM HASTINGS, NEBR. (CST) Reservations 462-2312				
MOAB, UTAH (MST) \$10.00					CODY-POWELL, WYO. \$22.00					6 00 8 39 517 4					TO				
8 20 7 41 511 0					6 00 7 42 517 C 2					2 10 8 46 515/23 4					COLUMBUS, NEBR. (CST) \$11.00				
2 35 1 56 573 0					Via Conn. Billings					ROCK SPRINGS, WYO. \$42.00					7 17 7 56 54 0				
MONTROSE, COLO. \$9.00					DENVER, COLO. (MDT) \$56.00					2 10 10 08 515/23 5					DENVER, COLO. (MDT) \$29.00				
10 35 10 53 572 0					6 00 12 03 517/501 8					Via Conn. Billings					9 03 12 05 51 3				
6 25 6 43 574 0					2 10 11 58 515/23/521 7					SALT LAKE CITY, UTAH \$42.00					4 50 6 26 553 1				
8 40 8 58 576 0					Via Conn. Billings-Riverton					6 00 10 26 517 6					KANSAS CITY, MO./KAN. \$25.00				
OMAHA, NEBR. (CST) \$54.00					EL PASO, TEX. \$104.00					2 10 5 05 515 3					11 54 1 55 552 3				
8 10 12 48 570/552 4					30 Day Round Trip Fare \$157.00					SIDNEY, MONT. \$30.00					7 17 12 20 54/568 2				
Via Conn. Denver					6 00 3 57 517 11					2 25 5 21 34 3					Via Conn. Lincoln				
10 35 3 11 572/566 5					2 10 10 57 515 8					TUCSON, ARIZ. \$101.00					KEARNEY, NEBR. \$7.00				
Via Conn. Denver					FARMINGTON, N.M. \$71.00					30 Day Round Trip Fare \$157.00					9 03 9 22 51 0				
PHOENIX, ARIZ (MST) \$45.00					6 00 1 37 517 8					6 00 3 21 517/501/507 11					4 50 5 06 553 0				
8 20 10 35 511/519 4					2 10 8 20 515 5					Via Conn. Riverton-Denver					LINCOLN, NEBR. \$11.00				
Via Conn. Farmington					GLASGOW, MONT. \$23.00					2 10 11 16 515/509 8					11 54 12 20 552 0				
8 39 10 16 515/509 2					2 25 4 13 34 1					Via Conn. Farmington					7 17 8 25 54 1				
Via Conn. Farmington					WILLISTON, N.D. (CST) \$34.00					WOLF POINT, MONT. \$26.00					McCOOK, NEBR. \$14.00				
POWELL-CODY, WYO. (MST) \$54.00					WILLISTON, N.D. (CST) \$34.00					2 25 7 08 34 4					9 03 10 06 51 1				
7 01 10 10 516 P 4					2 10 5 08 515/32 3					2 25 4 48 34 2					OMAHA, NEBR. \$15.00				
PUEBLO, COLO. \$21.00					Via Conn. Billings					WORLDWIDE, WYO. \$28.00					11 54 12 48 552 1				
10 35 1 21 572/19 3					GRAND JUNCTION, COLO. (MDT) \$60.00					6 00 8 10 517 3					7 17 9 10 54 2				
Via Conn. Denver					6 00 1 49 517 7					2 10 8 12 515/23 3					Via Conn. Omaha				
6 25 8 56 574/583 3					2 10 8 19 515 4					HAVRE, MONT. \$13.00					ST. JOSEPH, MO. \$21.00				
Via Conn. Denver					HAVRE, MONT. \$13.00					2 25 3 11 34 0					11 54 1 30 552 2				
8 40 10 48 576/593 3					2 25 3 11 34 0					6 00 8 10 517 3					7 17 10 40 54/564 3				
Via Conn. Denver					RAPID CITY, S. D. (MST) \$50.00					WORLDWIDE, WYO. \$28.00					SIDNEY, NEBR. (MST) \$24.00				
10 35 12 41 572/508 3					6 00 8 10 517 3					2 10 8 12 515/23 3					9 03 10 08 51 2				
Via Conn. Denver					2 10 8 19 515 4					Via Conn. Billings					Via Conn. Omaha				
6 25 8 51 574/510 2					RIVERTON, WYO. (MST) \$44.00					WORLDWIDE, WYO. \$28.00					TO				
Via Conn. Denver					7 01 8 54 516 2					6 00 8 10 517 3					COLUMBUS, NEBR. (CST) \$11.00				
RIVERTON, WYO. (MST) \$44.00					WORLDWIDE, WYO. \$28.00					2 10 8 12 515/23 3					7 17 7 56 54 0				
7 01 8 54 516 2					6 00 1 49 517 7					2 10 8 12 515/23 3					DENVER, COLO. (MDT) \$29.00				
ROCK SPRINGS, WYO. (MST) \$37.00					WORLDWIDE, WYO. \$28.00					Via Conn. Billings					9 03 12 05 51 3				
7 01 8 19 516 1					2 10 8 19 515 4					WORLDWIDE, WYO. \$28.00					4 50 6 26 553 1				
SALT LAKE CITY, UTAH (MST) \$21.00					WORLDWIDE, WYO. \$28.00					6 00 8 10 517 3					KANSAS CITY, MO./KAN. \$25.00				
10 27 10 18 512 0					6 00 8 10 517 3					2 10 8 12 515/23 3					11 54 1 55 552 3				
2 35 3 15 573 2					2 10 8 19 515 4					Via Conn. Billings					7 17 12 20 54/568 2				
7 01 6 52 516 0					HAVRE, MONT. \$13.00					6 00 8 10 517 3					Via Conn. Lincoln				
11 10 11 01 577 0					2 25 3 11 34 0					2 10 8 12 515/23 3					KEARNEY, NEBR. \$7.00				

NOW! Allison JET-Prop-POWERED Convair 580 Equipment.

FRONTIER AIRLINES OFFERS 9 GREAT PACKAGE VACATIONS...



ETABLE

EFFECTIVE APRIL 24, 1966
ALL TIMES SHOWN ARE LOCAL

Leave	Arrive	Flight	Freq.	Stops	Leave	Arrive	Flight	Freq.	Stops
GREAT FALLS, MONT. \$35.00					OMAHA, NEBR. (CST) \$64.00				
11 40 1 37 512 2					7 45 3 11 501/566 7				
HAVRE, MONT. \$42.00					Via Conn. Denver				
11 40 3 11 512/34 3					DC-3 Equipment Jackson-Riverton				
Via Conn. Great Falls					Effective June 1				
KANSAS CITY, MO./KAN. (CST) \$75.00					12 43 9 10 529/568/54 2				
7 45 2 55 501/560 6					Via Conn. Denver-Lincoln				
Via Conn. Denver					Effective June 1				
DC-3 Equipment Jackson-Riverton					PHOENIX, ARIZ. \$71.00				
Effective June 1					4 17 10 16 515/509 4				
12 43 9 20 529/568 2					Via Conn. Farmington				
Via Conn. Denver					7 45 2 27 501/507 6				
Effective June 1					Via Conn. Denver				
DC-3 Equipment Jackson-Riverton					Effective June 1				
LEWISTOWN, MONT. \$28.00					POWELL-CODY, WYO. \$22.00				
11 40 1 06 512 1					7 45 10 23 501/4 C 2				
LINCOLN, NEBR. (CST) \$62.00					Via Conn. Riverton				
7 45 2 02 501/560 5					DC-3 Equipment Jackson-Riverton				
Via Conn. Denver					Effective June 1				
DC-3 Equipment Jackson-Riverton					PUEBLO, COLO. (MDT) \$47.00				
Effective June 1					4 00 8 56 525/583 4				
12 43 8 27 529/568 1					Via Conn. Denver				
Via Conn. Denver					Discontinued After May 31				
Effective June 1					7 45 1 21 501/19 5				
MINOT, N.D. (CST) \$49.00					Via Conn. Denver				
11 40 8 01 512/34 8					DC-3 Equipment Jackson-Riverton				
Via Conn. Great Falls					Effective June 1				
RIVERTON, WYO. \$14.00					ROCK SPRINGS, WYO. \$22.00				
7 45 8 41 501 0					7 45 9 39 501/517 1				
DC-3 Equipment Jackson-Riverton					Via Conn. Riverton				
Effective June 1					DC-3 Equipment Jackson-Riverton				
ST. JOSEPH, MO. (CST) \$72.00					Effective June 1				
12 43 10 40 529/564 6					Via Conn. Denver				
Via Conn. Denver					Effective June 1				
SALT LAKE CITY, UTAH \$24.00					ST. JOSEPH, MO. (CST) \$72.00				
4 17 5 05 515 0					12 43 10 40 529/564 6				
7 45 10 26 501/517 2					Via Conn. Denver				
Via Conn. Riverton					Effective June 1				
DC-3 Equipment Jackson-Riverton					SALT LAKE CITY, UTAH \$24.00				
Effective June 1					4 17 5 05 515 0				
10 40 12 06 15 0					7 45 10 26 501/517 2				
Effective June 1					Via Conn. Riverton				
3 30 4 56 115 0					DC-3 Equipment Jackson-Riverton				
Effective June 1					Effective June 1				
SANTA FE, N.M. \$64.00					SCOTTSBLUFF, NEBR. \$39.00				
4 00 8 56 525/583 5					12 43 6 29 529/564 1				
Via Conn. Denver					Via Conn. Denver				
Discontinued May 31					Effective June 1				
TUCSON, ARIZ. \$78.00					TUCSON, ARIZ. \$78.00				
4 17 11 16 515/509 5					4 17 11 16 515/509 5				
Via Conn. Farmington					Via Conn. Farmington				
7 45 3 21 501/507 6					7 45 3 21 501/507 6				
Via Conn. Denver					Via Conn. Denver				
DC-3 Equipment Jackson-Riverton					DC-3 Equipment Jackson-Riverton				
Effective June 1					Effective June 1				
VERNAL, UTAH \$26.00					NORTH PLATTE, NEBR. (CST) \$50.00				
10 40 4 07 15/574 1					7 45 1 53 501/566 5				
Via Conn. Salt Lake City					Via Conn. Denver				
Effective June 1					DC-3 Equipment Jackson-Riverton				
WORLAND, WYO. \$18.00					Effective June 1				
7 45 9 46 501/4 1					12 43 8 17 529/564 2				
Via Conn. Riverton					Via Conn. Denver				
DC-3 Equipment Jackson-Riverton					Effective June 1				



FRONTIER AIRLINES SYSTEM TIME

Leave	Arrive	Flight	Freq.	Stops	Leave	Arrive	Flight	Freq.	Stops	Leave
FROM GRAND JUNCTION, COLO. CONTINUED										
TO										
GALLUP, N. M. (MST) \$23.00										
8 20	9 22	511		2						
1 56	3 20	517/589		2						
Via Conn. Albuquerque										
GREAT FALLS, MONT. (MST) \$60.00										
10 27	1 37	512		4						
7 01	11 55	516		7						
GUNNISON, COLO. \$13.00										
10 35	11 18	572		1						
JACKSON, WYO. (MST) \$39.00										
10 27	11 30	512		1						
KANSAS CITY, MO./KAN. (CST) \$64.00										
8 10	1 55	570/552		6						
Via Conn. Denver										
10 35	2 55	572/560		4						
Via Conn. Denver										
LEWISTOWN, MONT. (MST) \$59.00										
10 27	1 06	512		3						
7 01	11 23	516		6						
LINCOLN, NEBR. (CST) \$51.00										
8 10	12 20	570/552		3						
Via Conn. Denver										
10 35	2 02	572/560		3						
Via Conn. Denver										
MOAB, UTAH (MST) \$10.00										
8 20	7 41	511		0						
2 35	1 56	573		0						
MONTROSE, COLO. \$ 9.00										
10 35	10 53	572		0						
6 25	6 43	574		0						
8 40	8 58	576		0						
OMAHA, NEBR. (CST) \$54.00										
8 10	12 48	570/552		4						
Via Conn. Denver										
10 35	3 11	572/566		5						
Via Conn. Denver										
PHOENIX, ARIZ (MST) \$45.00										
8 20	10 35	511/519		4						
Via Conn. Farmington										
8 39	10 16	515/509		2						
Via Conn. Farmington										
POWELL-CODY, WYO. (MST) \$54.00										
7 01	10 10	516 P		4						
PUEBLO, COLO. \$21.00										
10 35	1 21	572/19		3						
Via Conn. Denver										
6 25	8 56	574/583		3						
Via Conn. Denver										
8 40	10 48	576/593		3						
Via Conn. Denver										
RAPID CITY, S. D. (MST) \$50.00										
10 35	12 41	572/508		3						
Via Conn. Denver										
6 25	8 51	574/510		2						
Via Conn. Denver										
RIVERTON, WYO. (MST) \$44.00										
7 01	8 54	516		2						
ROCK SPRINGS, WYO. (MST) \$37.00										
7 01	8 19	516		1						
SALT LAKE CITY, UTAH (MST) \$21.00										
10 27	10 18	512		0						
2 35	3 15	573		0						
7 01	6 52	516		0						
11 10	11 01	577		0						
TUCSON, ARIZ. (MST) \$53.00										
8 20	11 41	511/519		5						
Via Conn. Farmington										
8 39	11 16	515/509		3						
Via Conn. Farmington										
VERNAL, UTAH (MST) \$13.00										
2 35	2 34	573		1						
WORLAND, WYO. (MST) \$49.00										
7 01	9 40	516		3						
FROM GREAT FALLS, MONT. Reservations 453-4844 (MST)										
TO										
ALAMOGORDO, N.M. \$97.00										
6 00	3 30	517		10						
2 10	10 30	515		7						
ALBUQUERQUE, N.M. \$84.00										
30 Day Round Trip Fare \$131.00										
6 00	2 31	517		9						
2 10	9 20	515		6						
ASPEN, COLO. (MDT) \$60.00										
Served Through Grand Junction										
6 00	1 49	517		7						
2 10	8 19	515		4						
BILLINGS, MONT. \$16.00										
6 00	6 55	517		1						
2 10	3 05	515		1						
BISMARCK, N.D. (CST) \$45.00										
2 25	8 52	34		6						
CHEYENNE, WYO. \$49.00										
6 00	10 29	517/501		7						
Via Conn. Riverton										
2 10	10 25	515/23/521		6						
Via Conn. Billings-Riverton										
CODY-POWELL, WYO. \$22.00										
6 00	7 42	517 C		2						
2 10	7 36	515/23 P		2						
Via Conn. Billings										
DENVER, COLO. (MDT) \$56.00										
6 00	12 03	517/501		8						
Via Conn. Riverton										
2 10	11 58	515/23/521		7						
Via Conn. Billings-Riverton										
EL PASO, TEX. \$104.00										
30 Day Round Trip Fare \$157.00										
6 00	3 57	517		11						
2 10	10 57	515		8						
FARMINGTON, N.M. \$71.00										
6 00	1 37	517		8						
2 10	8 20	515		5						
GLASGOW, MONT. \$23.00										
2 25	4 13	34		1						
GLENDAVE, MONT. \$35.00										
2 10	5 08	515/32		3						
Via Conn. Billings										
GRAND JUNCTION, COLO. (MDT) \$60.00										
6 00	1 49	517		7						
2 10	8 19	515		4						
HAVRE, MONT. \$13.00										
2 25	3 11	34		0						

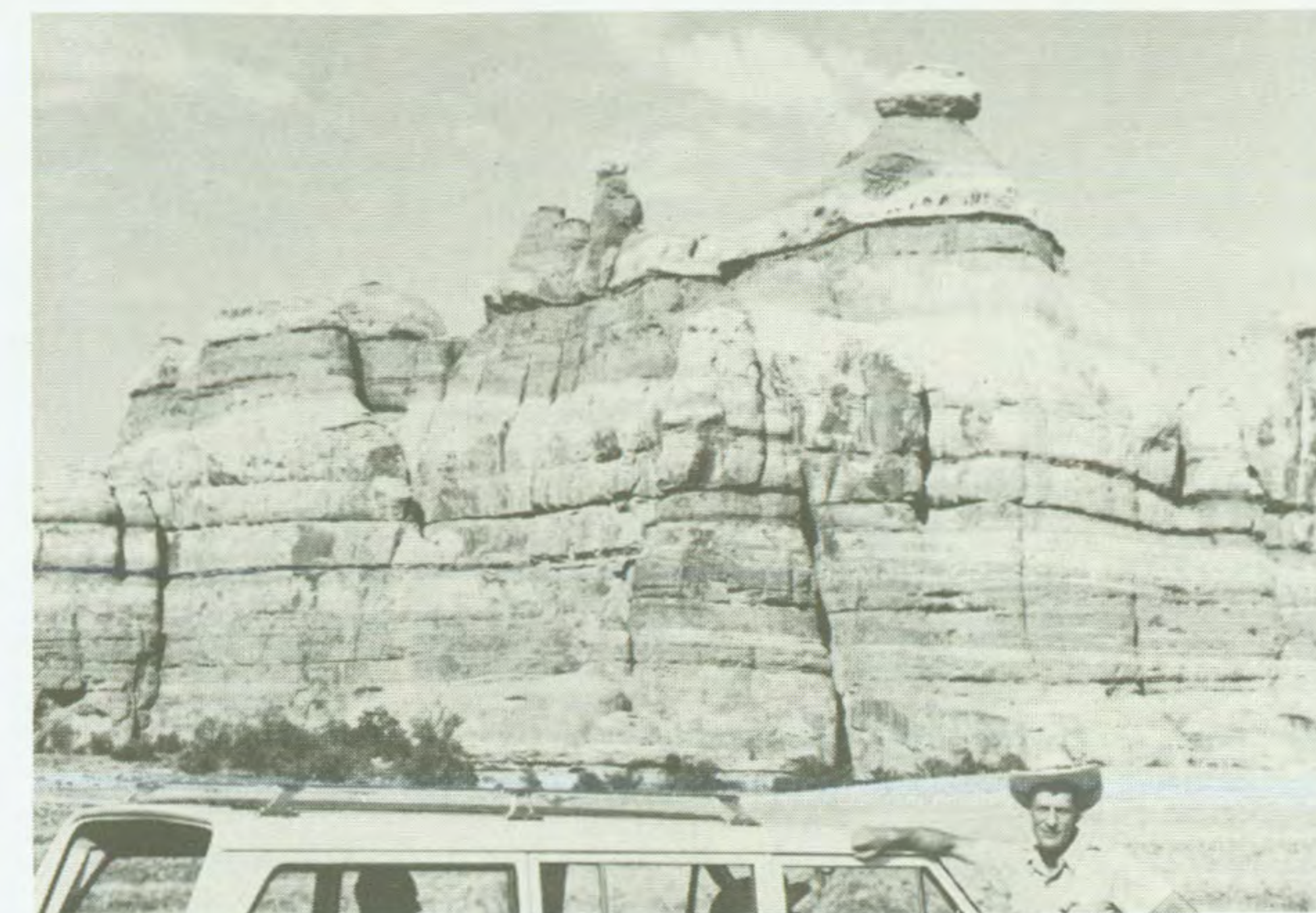
...TO THE MOST SCENIC SPOTS IN THE WEST!



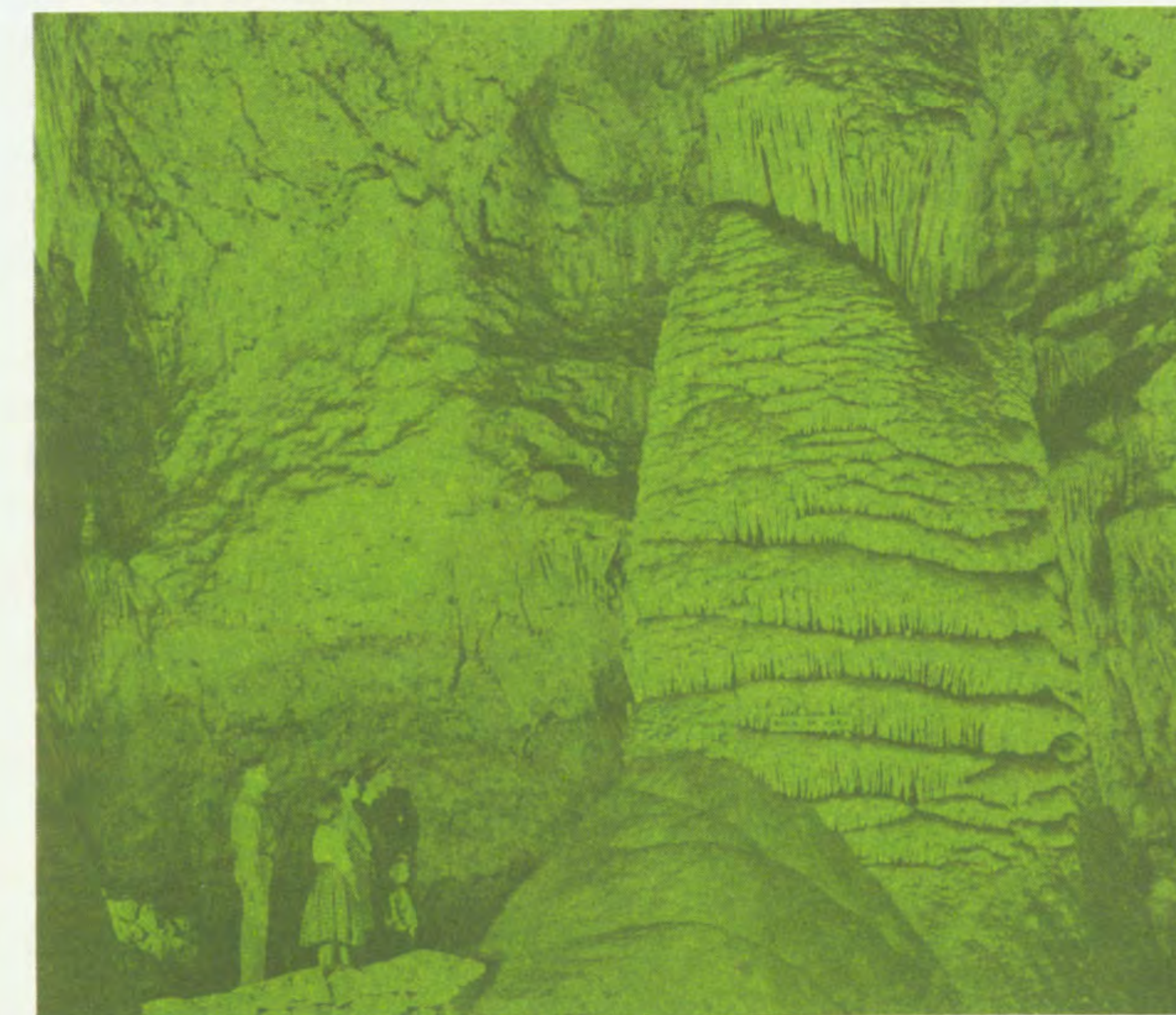
1. GRAND CANYON NATIONAL PARK You can take your pick of a three-day or four-day tour to America's greatest single scenic wonder—the Grand Canyon. This marvel of nature is 217 miles long, 4 to 18 miles wide and a mile deep. Frontier's tours take you by bus to such conducted sightseeing trips as the Desert View-Watchtower drive and the Hermit's Rest Canyon Rim sightseeing drive. Also on the agenda are the Hopi Indian dances. The Frontier Airlines gateway city for these tours is Flagstaff, Arizona.



2. GRAND TETON NATIONAL PARK This four-day tour takes you to an area of rich and rugged beauty. Rising abruptly from the almost level basin of Jackson Hole, the magnificent Grand Teton Range dominates the landscape. Frontier's tour includes a six-hour amphibious circle tour of the Jackson Hole and Teton area. A boat trip on Jackson Lake with lunch on Elk Island is the highlight of the day. The tour also offers a six-hour, 30-mile float trip down the colorful Snake River. You'll enjoy the relaxing beauty of this trip, stopping at mid-day for lunch on Deadman's Bar in mid-river. There is ample free time to hike, boat, ride horseback, fish, sightsee or just plain relax by the heated pool. The Frontier Airlines gateway city for this tour is Jackson, Wyoming.



3. CANYONLANDS NATIONAL PARK You can enjoy a five-day tour through America's newest national park. The northern section of the picturesque park in Utah is called "Island in the Sky." Frontier's tour takes you through this area in comfortable, 4-wheel drive, air-conditioned vehicles. You'll travel along the Colorado River past Indian ruins and dinosaur tracks. This tour also takes you to the inspiring Angel Arch Canyon to show you Newspaper Rock, Dug-Out Ranch, Six Shooter Peaks, and Peek-A-Boo Arch. The highlight of the tour is a boat trip down the Colorado River past petrified forests, Indian ruins and writings. Before returning, you will have a hearty buffet lunch in a cool cave at the river's edge. The Frontier Airlines gateway city for this tour is Moab, Utah.



4. CARLSBAD CAVERNS NATIONAL PARK, EL PASO, TEXAS AND JUAREZ, MEXICO A fascinating three-day tour includes a one-day trip to the wonderland of stalactites and stalagmites which is Carlsbad Caverns National Park. Also included is a guided tour of the neighboring cities of El Paso, Texas and Juarez, Mexico during which you will visit a glass factory, a bull ring and the 300 year old Guadalupe Mission. You'll have plenty of opportunity to shop for Mexican arts, crafts and glassware. The Frontier Airlines gateway city for this tour is El Paso, Texas.



5. YELLOWSTONE NATIONAL PARK You can enjoy three-day or four-day tours through one of America's most popular and spectacular National Parks. Yellowstone is a 3,472 square mile wonderland containing some 200 geysers and a myriad of brilliant and startling hot springs, pools, mud pots and other thermal phenomena. Besides visiting Old Faithful, Frontier's tours include other geysers, canyons and cascades. The Frontier Airlines gateway city for these tours is Jackson, Wyoming.



6. ROCKY MOUNTAIN NATIONAL PARK There are 84 spectacular named peaks in Rocky Mountain National Park in Colorado rising at least 11,000 feet above sea level. On Frontier's three-day tour, you can see all of them. You'll go by bus through Big Thompson Canyon to Estes Park and then continue on to Rocky Mountain National Park via Trail Ridge Road, the highest continuous automobile highway in the world. Brief stops are made along the way to allow you to capture some of these magnificent vistas on film. All around you are evidences of the work of glaciers. And as you reach the top of Trail Ridge Road, at an elevation of 12,183 feet, you will marvel at the sight of lofty mountain peaks at your feet, and the Great Plains reaching to the east. The tour also includes sightseeing via Winter Park, Berthoud Pass, Idaho Springs and Clear Creek Canyon. The Frontier Airlines gateway city for this tour is Denver, Colorado.

FRONTIER AIRLINES SYSTEM TIME

Leave	Arrive	Flight	Freq.	Stops	Leave	Arrive	Flight	Freq.	Stops
FROM GRAND JUNCTION, COLO. CONTINUED					TUCSON, ARIZ. (MST) \$53.00				
					8 20	11 41	511/519		5
					Via Conn. Farmington				
					8 39	11 16	515/509		3
					Via Conn. Farmington				
GALLUP, N. M. (MST) \$23.00					VERNAL, UTAH (MST) \$13.00				
8 20	9 22	511		2	2 35	2 34	573		1
1 56	3 20	517/589		2	Via Conn. Farmington				
Via Conn. Albuquerque					WORLAND, WYO. (MST) \$49.00				
GREAT FALLS, MONT. (MST) \$60.00					7 01	9 40	516		3
10 27	1 37	512		4	FROM GREAT FALLS, MONT. Reservations 453-4844 (MST)				
7 01	11 55	516		7	TO				
GUNNISON, COLO. \$13.00					ALAMOGORDO, N.M. \$97.00				
10 35	11 18	572		1	6 00	3 30	517		10
JACKSON, WYO. (MST) \$39.00					2 10	10 30	515		7
10 27	11 30	512		1	ALBUQUERQUE, N.M. \$84.00				
KANSAS CITY, MO./KAN. (CST) \$64.00					30 Day Round Trip Fare \$131.00				
8 10	1 55	570/552		6	6 00	2 31	517		9
Via Conn. Denver					2 10	9 20	515		6
10 35	2 55	572/560		4	ASPEN, COLO. (MDT) \$60.00				
Via Conn. Denver					Served Through Grand Junction				
LEWISTOWN, MONT. (MST) \$59.00					6 00	1 49	517		7
10 27	1 06	512		3	2 10	8 19	515		4
7 01	11 23	516		6	BILLINGS, MONT. \$16.00				
LINCOLN, NEBR. (CST) \$51.00					6 00	6 55	517		1
8 10	12 20	570/552		3	2 10	3 05	515		1
Via Conn. Denver					BISMARCK, N.D. (CST) \$45.00				
10 35	2 02	572/560		3	2 25	8 52	34		6
Via Conn. Denver					CHEYENNE, WYO. \$49.00				
MUAB, UTAH (MST) \$10.00					6 00	10 29	517/501		7
8 20	7 41	511		0	Via Conn. Riverton				
2 35	1 56	573		0	2 10	10 25	515/23/521		6
MONTROSE, COLO. \$ 9.00					Via Conn. Billings-Riverton				
10 35	10 53	572		0	CODY-POWELL, WYO. \$22.00				
6 25	6 43	574		0	6 00	7 42	517 C		2
8 40	8 58	576		0	2 10	7 36	515/23 P		2
OMAHA, NEBR. (CST) \$54.00					Via Conn. Billings				
8 10	12 48	570/552		4	DENVER, COLO. (MDT) \$56.00				
Via Conn. Denver					6 00	12 03	517/501		8
10 35	3 11	572/566		5	Via Conn. Riverton				
Via Conn. Denver					2 10	11 58	515/23/521		7
PHOENIX, ARIZ (MST) \$45.00					Via Conn. Billings-Riverton				
8 10	10 35	511/519		4	EL PASO, TEX. \$104.00				
8 39	10 16	515/509		2	30 Day Round Trip Fare \$157.00				
Via Conn. Farmington					6 00	3 57	517		11
POWELL-CODY, WYO. (MST) \$54.00					2 10	10 57	515		8
7 11	10 10	516 P		4	FARMINGTON, N.M. \$71.00				
PUEBLO, COLO. \$21.00					6 00	1 37	517		8
10 35	1 21	572/19		3	2 10	8 20	515		5
Via Conn. Denver					GLASGOW, MONT. \$23.00				
6 35	8 56	574/583		3	2 25	4 13	34		1
Via Conn. Denver					GLENDEIVE, MONT. \$35.00				
8 10	10 48	576/593		3	2 10	5 08	515/32		3
Via Conn. Denver					Via Conn. Billings				
RAPID CITY, S. D. (MST) \$50.00					GRAND JUNCTION, COLO. (MDT) \$60.00				
10 35	12 41	572/508		3	6 00	1 49	517		7
Via Conn. Denver					2 10	8 19	515		4
6 35	8 51	574/510		2	HAVRE, MONT. \$13.00				
Via Conn. Denver					2 25	3 11	34		0
RIVERTON, WYO. (MST) \$44.00					FROM HAVRE, MONT. (MST) Reservations 265-7911				
7 11	8 54	516		2	TO				
ROCK SPRINGS, WYO. (MST) \$37.00					BILLINGS, MONT. \$26.00				
7 11	8 19	516		1	12 26	3 05	33/515		2
SALT LAKE CITY, UTAH (MST) \$21.00					Via Conn. Great Falls				
10 27	10 18	512		0	BISMARCK, N.D. (CST) \$42.00				
2 35	3 15	573		2	3 14	8 52	34		5
7 11	6 52	516		0	GLASGOW, MONT. \$16.00				
11 10	11 01	577		0	3 14	4 13	34		0



9. SANTA FE / TAOS A three-day tour takes you to the romantic and picturesque Santa Fe/Taos area. It is like another world where three cultures—Indian, Spanish and Anglo-American—are blended into a charming composite of past and present. Frontier's tour includes a 150 mile conducted tour to Taos Indian Pueblo, the only five-story inhabited pueblo in America. Highlights of the trip will include a tour of Taos, an old Indian-Spanish-American frontier town and visits to the Artist Colony, art galleries, museum and the home of Kit Carson, famous pioneer guide in the early West. The Frontier Airlines gateway city for this tour is Santa Fe, New Mexico.

FRONTIER AIRLINES

The airline that knows the West. Best.

FRONTIER AIRLINES, Dept. S, 5900 E. 39th Ave., Denver, Colo. 80207

Dear Sir:

Please send me your colorful brochure giving complete details about the 9 great Frontierland package vacations.

Name _____

Address _____

City _____ State _____ Zip _____

FRONTIER AIRLINES SYSTEM TIMETABLE

EFFECTIVE APRIL 24, 1966
ALL TIMES SHOWN ARE LOCAL

Leave	Arrive	Flight	Freq.	Stops	Leave	Arrive	Flight	Freq.	Stops
FROM HAVRE, MONT. (MST) Reservations 265-7911					CHADRON, NEBR. \$42.00				
					4 00	10 55	525/48		4
TO					Via Conn. Cheyenne				
BILLINGS, MONT. \$26.00					Discontinued After May 31				
12 26	3 05	33/515		2	12 43	10 55	529/48		4
Via Conn. Great Falls					Via Conn. Denver				
BISMARCK, N.D. (CST) \$42.00					Effective June 1				
3 14	8 52	34		5	CHEYENNE, WYO. \$34.00				
GLASGOW, MONT. \$16.00					4 00	5 32	525		1
3 14	4 13	34		0	Discontinued After May 31				
GREAT FALLS, MONT. \$13.00					7 45	10 29	501		3
12 26	1 11	33		0	DC-3 Equipment Jackson-Riverton				
JACKSON, WYO. \$42.00					Effective June 1				
12 26	4 07	33/515		3	CODY-POWELL, WYO. \$22.00				
Via Conn. Great Falls					7 45	10 23	501/4 C		2
LEWISTOWN, MONT. \$19.00					Via Conn. Riverton				
12 26	2 35	33/515		1	DC-3 Equipment Jackson-Riverton				
Via Conn. Great Falls					Effective June 1				
MINOT, N.D. (CST) \$34.00					COLORADO SPRINGS, COLO. (MDT) \$45.00				
3 14	8 01	34		4	4 00	8 10	525/95		3
PHOENIX, ARIZ. \$103.00					Via Conn. Denver				
30 Day Round Trip Fare \$155.00					Discontinued After May 31				
12 26	10 16	33/515/509		8	7 45	1 07	501/507		5
Via Conn. Great Falls-Farmington					Via Conn. Denver				
SALT LAKE CITY, UTAH \$52.00					DC-3 Equipment Jackson-Riverton				
12 26	5 05	33/515		4	Effective June 1				
Via Conn. Great Falls					COLUMBUS, NEBR. (CST) \$62.00				
SIDNEY, MONT. \$24.00					12 43	7 56	529/54		5
3 14	5 21	34		2	Via Conn. Denver				
WILLISTON, N.D. (CST) \$27.00					Effective June 1				
3 14	7 08	34		3	DENVER, COLO. (MDT) \$40.00				
WOLF POINT, MONT. \$19.00					4 00	7 05	525		2
3 14	4 48	34		1	Discontinued After May 31				
FROM JACKSON, WYO. (MST) Reservations 733-3100 Moran, Wyo. 543-2529 Jackson Lake Lodge 543-2529					7 45	12 03	501		4
TO					DC-3 Equipment Jackson-Riverton				
ALAMOGORDO, N.M. \$75.00					Effective June 1				
4 17	10 30	515		4	DURANGO, COLO. (MDT) \$52.00				
ALBUQUERQUE, N.M. \$64.00					4 17	10 06	515/518		3
4 17	9 20	515		3	Via Conn. Farmington				
ASPEN, COLO. (MDT) \$39.00					EL PASO, TEX. \$85.00				
Served Through Grand Junction					4 17	10 57	515		5
4 17	8 19	515		1	7 45	3 47	501/517		7
7 45	1 49	501/517		3	Via Conn. Riverton				
Via Conn. Riverton					DC-3 Equipment Jackson-Riverton				
DC-3 Equipment Jackson-Riverton					Effective June 1				
10 40	6 09	15/574		3	FARMINGTON, N.M. \$50.00				
Via Conn. Salt Lake City					4 17	8 20	515		2
Effective June 1					7 45	1 37	501/517		4
BILLINGS, MONT. \$22.00					Via Conn. Riverton				
11 40	12 23	512		0	DC-3 Equipment Jackson-Riverton				
7 45	11 06	501/4		3	Effective June 1				
Via Conn. Riverton					FLAGSTAFF, ARIZ. \$67.00				
DC-3 Equipment Jackson-Riverton					4 17	9 39	515/509		3
Effective June 1					Via Conn. Farmington				
CASPER, WYO. \$21.00					GRAND ISLAND, NEBR. (CST) \$59.00				
4 00	4 48	525		0	7 45	2 32	501/566		6
Discontinued After May 31					Via Conn. Denver				
7 45	9 26	501		1	DC-3 Equipment Jackson-Riverton				
DC-3 Equipment Jackson-Riverton					Effective June 1				
Effective June 1					12 43	8 56	529/564		4
GRAND JUNCTION, COLO. (MDT) \$39.00					Via Conn. Denver				
4 17	8 19	515		1	GRAND ISLAND, NEBR. (CST) \$59.00				
7 45	1 49	501/517		3	7 45	2 32	501/566		6
Via Conn. Riverton					Via Conn. Denver				
DC-3 Equipment Jackson-Riverton					DC-3 Equipment Jackson-Riverton				
Effective June 1					Effective June 1				
10 40	6 09	15/574		3	NORTH PLATTE, NEBR. (CST) \$50.00				
Via Conn. Salt Lake City					7 45	1 53	501/566		5
Effective June 1					Via Conn. Denver				
EL PASO, TEX. \$85.00					DC-3 Equipment Jackson-Riverton				
4 17	10 57	515		5	Effective June 1				
7 45	3 47	501/517		7	OMAHA, NEBR. (CST) \$64.00				
Via Conn. Riverton					7 45	3 11	501/566		7
DC-3 Equipment Jackson-Riverton					Via Conn. Denver				
Effective June 1					DC-3 Equipment Jackson-Riverton				
FARMINGTON, N.M. \$50.00					Effective June 1				
4 17	8 20	515		2	HAVRE, MONT. \$42.00				
7 45	1 37	501/517		4	11 40	3 11	512/34		3
Via Conn. Riverton					Via Conn. Great Falls				
DC-3 Equipment Jackson-Riverton					KANSAS CITY, MO./KAN. (CST) \$75.00				
Effective June 1					7 45	2 55	501/560		6
EL PASO, TEX. \$85.00					DC-3 Equipment Jackson-Riverton				
4 17	10 57	515		5	Effective June 1				
7 45	3 47	501/517		7	12 43	9 20	529/568		2
Via Conn. Riverton					Via Conn. Denver				
DC-3 Equipment Jackson-Riverton					Effective June 1				
Effective June 1					LEWISTOWN, MONT. \$28.00				
FLAGSTAFF, ARIZ. \$67.00					11 40	1 06	512		1
4 17	9 39	515/509		3	Via Conn. Riverton				
Via Conn. Farmington					DC-3 Equipment Jackson-Riverton				
GRAND ISLAND, NEBR. (CST) \$59.00					Effective June 1				
7 45	2 32	501/566		6	LINCOLN, NEBR. (CST) \$62.00				
Via Conn. Denver					7 45	2 02	501/560		5
DC-3 Equipment Jackson-Riverton					Via Conn. Denver				
Effective June 1					DC-3 Equipment Jackson-Riverton				
12 43	8 56	529/564		4	Effective June 1				
Via Conn. Denver					PUEBLO, COLO. (MDT) \$47.00				
Effective June 1					4 00	8 56	525/583		4
GRAND JUNCTION, COLO. (MDT) \$39.00					Via Conn. Denver				
4 17	8 19	515		1	Discontinued After May 31				
7 45	1 49	501/517		3	7 45	1 21	501/19		5
Via Conn. Riverton					Via Conn. Denver				
DC-3 Equipment Jackson-Riverton					DC-3 Equipment Jackson-Riverton				
Effective June 1					Effective June 1				
10 40	6 09	15/574		3	RIVERTON, WYO. \$14.00				
Via Conn. Salt Lake City					7 45	8 41	501		0
Effective June 1					DC-3 Equipment Jackson-Riverton				
Effective June 1					Effective June 1				
BILLINGS, MONT. \$22.00					ROCK SPRINGS, WYO. \$22.00				
11 40	12 23	512		0	7 45				

FRONTIER AIRLINES SYSTEM TIMETABLE

EFFECTIVE APRIL 24, 1966
ALL TIMES SHOWN ARE LOCAL

Leave	Arrive	Flight	Freq.	Stops	Leave	Arrive	Flight	Freq.	Stops	Leave	Arrive	Flight	Freq.	Stops	Leave	Arrive	Flight	Freq.	Stops	Leave	Arrive	Flight	Freq.	Stops
FROM KANSAS CITY, MO./KAN. (CST)					GRAND ISLAND, NEBR. \$24.00					RIVERTON, WYO. (MST) \$64.00					OMAHA, NEBR. \$17.00									
Reservations VI 2-6252 Air Cargo VI 2-6256					7 45 9 45 561 3 2 35 4 17 553/567 2 Via Conn. Omaha					2 35 8 47 553/522 9 Via Conn. Denver					11 32 12 48 552 2 6 55 9 10 54 3									
TO					ST. JOSEPH, MO. \$ 8.00					ST. JOSEPH, MO. \$24.00					TO									
ALBUQUERQUE, N.M. (MST) \$77.00					GRAND JUNCTION, COLO. (MDT) \$64.00					SALT LAKE CITY, UTAH (MST) \$78.00					TUCSON, ARIZ. \$69.00									
7 00 10 59 569/591 3 Via Conn. Denver					7 00 2 19 569/573 3 Via Conn. Denver					7 00 3 15 569/573 7 Via Conn. Denver					30 Day Round Trip Fare \$102.00 10 11 3 21 501/507 4 Via Conn. Denver									
1 35 9 20 565/509/515 4 Via Conn. Denver-Farmington					GREAT FALLS, MONT. (MST) \$78.00					SIDNEY, NEBR. (MST) \$21.00					1 20 11 16 5/509 6 Via Conn. Denver									
ALLIANCE, NEBR. (MST) \$44.00					1 35 11 55 565/522/516 10 Via Conn. Denver-Riverton					FROM LARAMIE, WYO. (MST)					WORLAND, WYO. \$25.00									
7 45 11 24 561/42 6 Via Conn. Scottsbluff					HASTINGS, NEBR. \$25.00					Reservations 745-5656					7 37 9 40 522/516 2 Via Conn. Riverton									
6 50 10 24 563/48 5 Via Conn. Scottsbluff					7 00 9 00 569/51 2 Via Conn. Lincoln					TO					FROM LEWISTOWN, MONT. (MST)									
ASPEN, COLO. (MDT) \$64.00					JACKSON, WYO. (MST) \$75.00					BILLINGS, MONT. \$36.00					Reservations 538-9621 (MST)									
Served Through Grand Junction 7 00 2 19 569/573 3 Via Conn. Denver					7 00 3 40 569/526 4 Via Conn. Denver					7 37 10 37 522/516 4 Via Conn. Riverton					TO									
1 35 8 15 565/575 2 Via Conn. Denver					Discontinued After May 31 7 45 12 17 569/530 2 Via Conn. Denver					CASPER, WYO. \$16.00					ALBUQUERQUE, N.M. \$81.00									
BILLINGS, MONT. (MST) \$78.00					KEARNEY, NEBR. \$27.00					CHEYENNE, WYO. \$ 8.00					30 Day Round Trip Fare \$124.00 6 30 2 31 517 8 2 40 9 20 515 5									
1 35 10 37 565/522/516 8 Via Conn. Denver-Riverton					7 00 9 22 569/51 3 Via Conn. Lincoln					10 11 10 29 501 0 1 20 1 43 5 0					ASPEN, COLO. (MDT) \$59.00									
CASPER, WYO. (MST) \$59.00					LARAMIE, WYO. (MST) \$52.00					CODY-POWELL, WYO. \$31.00					Served Through Grand Junction 6 30 1 49 517 6 2 40 8 19 515 3									
2 35 8 09 553/522 7 Via Conn. Denver					7 00 1 12 569/6 3 Via Conn. Denver					DENVER, COLO. (MDT) \$15.00					BILLINGS, MONT. \$12.00									
CHADRON, NEBR. (MST) \$47.00					2 35 7 31 553/522 7 Via Conn. Denver					10 11 12 03 501 1 1 20 3 29 5 1					6 30 6 55 517 0 2 40 3 05 515 0									
7 45 11 55 561/42 7 Via Conn. Scottsbluff					LINCOLN, NEBR. \$16.00					KANSAS CITY, MO./KAN. (CST) \$52.00					CASPER, WYO. \$31.00									
6 50 10 55 563/48 6 Via Conn. Scottsbluff					7 00 7 43 569 0 7 45 9 09 561 2 1 35 2 18 565 0 2 35 4 06 553 2 3 55 4 38 665 0 6 50 8 16 563 1 10 20 11 22 663 1					10 11 2 55 501/560 3 Via Conn. Denver					6 30 9 26 517/501 4 Via Conn. Riverton									
CHEYENNE, WYO. (MST) \$45.40					2 35 7 03 553/522 6 Via Conn. Denver					1 20 9 20 5/568 3 Via Conn. Denver					2 40 9 41 515/23/521 4 Via Conn. Billings-Riverton									
7 45 12 41 561/6 7 Via Conn. Denver					NORTH PLATTE, NEBR. \$34.00					OMAHA, NEBR. (CST) \$45.00					CHEYENNE, WYO. \$45.00									
2 35 7 03 553/522 6 Via Conn. Denver					7 45 10 26 561 4 2 35 4 57 553/567 3 Via Conn. Omaha					10 11 3 11 501/566 4 Via Conn. Denver					6 30 10 29 517/501 6 Via Conn. Riverton									
CODY-POWELL, WYO. (MST) \$76.00					OMAHA, NEBR. \$16.00					PHOENIX, ARIZ. (MST) \$94.00					2 40 10 25 515/23/521 5 Via Conn. Billings-Riverton									
2 35 10 10 553/522/516 P 11 Via Conn. Denver-Riverton					7 45 8 38 561 1 2 35 3 28 553 1 6 50 7 34 563 0					30 Day Round Trip Fare \$133.00 7 00 2 27 569/507 3 Via Conn. Denver					6 30 10 29 517/501 6 Via Conn. Riverton									
COLORADO SPRINGS, COLO. (MDT) \$45.40					PHOENIX, ARIZ. (MST) \$94.00					TO					CODY-POWELL, WYO. \$17.00									
7 00 1 07 569/507 2 Via Conn. Denver					30 Day Round Trip Fare \$133.00 7 00 2 27 569/507 3 Via Conn. Denver					6 30 7 42 517 C 1 2 40 7 36 515/23 P 1 Via Conn. Billings					6 30 7 42 517 C 1 2 40 7 36 515/23 P 1 Via Conn. Billings									
2 35 8 10 553/95 6 Via Conn. Denver					PUEBLO, COLO. (MDT) \$53.00					FROM KEARNEY, NEBR. (CST)					DENVER, COLO. (MDT) \$52.00									
COLUMBUS, NEBR. \$20.00					7 00 1 21 569/19 2 Via Conn. Denver					Reservations 236-2921					6 30 12 03 517/501 7 Via Conn. Riverton									
7 00 8 19 569/51 1 Via Conn. Lincoln					2 35 8 56 553/583 7 Via Conn. Denver					TO					EL PASO, TEX. \$103.00									
6 50 10 38 563/57 1 Via Conn. Omaha					RAPID CITY, S.D. (MST) \$53.00					COLUMBUS, NEBR. \$14.00					30 Day Round Trip Fare \$150.00 6 30 3 57 517 10 2 40 10 57 515 7									
DENVER, COLO. (MDT) \$45.40					7 00 12 41 569/508 2 Via Conn. Denver					6 55 7 56 54 1					FARMINGTON, N.M. \$70.00									
7 45 12 04 561 6 1 35 4 04 565 1 2 35 6 26 553 5 6 50 11 15 563 5					SANTA FE, N.M. (MST) \$73.00					DENVER, COLO. (MDT) \$26.00					GLASGOW, MONT. \$26.00									
DURANGO, COLO. (MDT) \$66.00					11 32 12 20 552 1 6 55 8 25 54 2					9 25 12 05 51 2 5 12 6 26 553 0					1 11 4 13 512/34 2 Via Conn. Great Falls									
7 00 3 04 569/19 4 Via Conn. Denver					LINCOLN, NEBR. \$14.00					HASTINGS, NEBR. \$ 7.00					GLENDAVE, MONT. \$27.00									
2 35 8 54 553/509 6 Via Conn. Denver					11 32 12 20 552 1 6 55 8 25 54 2					7 00 1 21 569/19 2 Via Conn. Denver					2 40 5 08 515/32 2 Via Conn. Billings									
EL PASO, TEX. (MST) \$95.00					McCOOK, NEBR. \$12.00					KANSAS CITY, MO./KAN. \$27.00					GRAND JUNCTION, COLO. (MDT) \$59.00									
7 00 12 28 569/591 5 Via Conn. Denver					9 25 10 06 51 0					11 32 1 55 552 4 6 55 9 20 54/568 4 Via Conn. Lincoln					6 30 1 49 517 7 2 40 8 19 515 3									
2 35 10 57 553/509/515 10 Via Conn. Denver-Farmington					PHOENIX, ARIZ. (MST) \$94.00					LINCOLN, NEBR. \$14.00					GREAT FALLS, MONT. \$11.00									
FARMINGTON, N.M. (MST) \$69.00					30 Day Round Trip Fare \$133.00 7 00 2 27 569/507 3 Via Conn. Denver					11 32 12 20 552 1 6 55 8 25 54 2					1 11 1 37 512 0 11 29 11 55 516 0									
2 35 8 17 553/509 7 Via Conn. Denver					RAPID CITY, S.D. (MST) \$53.00					McCOOK, NEBR. \$12.00					HAVRE, MONT. \$19.00									
FLAGSTAFF, ARIZ. (MST) \$89.00					7 00 12 41 569/508 2 Via Conn. Denver					9 25 10 06 51 0					1 11 3 11 512/34 1 Via Conn. Great Falls									
2 35 9 39 553/509 8 Via Conn. Denver					7 45 12 37 561/42 8 Via Conn. Scottsbluff					TO					JACKSON, WYO. \$28.00									
					2 35 8 51 553/510 6 Via Conn. Denver					BILLINGS, MONT. \$36.00					2 40 4 07 515 1 6 30 10 12 517/502 4 Via Conn. Riverton									
					6 50 11 37 563/48 7 Via Conn. Scottsbluff					FROM LARAMIE, WYO. (MST)					DC-3 Equipment Jackson-Riverton Effective June 1									
					Via Conn. Scottsbluff					Reservations 745-5656					MINOT, N.D. (CST) \$39.00									
					Via Conn. Scottsbluff					Via Conn. Riverton					2 40 8 01 515/32/34 5 Via Conn. Billings-Sidney									
					Via Conn. Scottsbluff					Via Conn. Riverton					PHOENIX, ARIZ. \$92.00									
					Via Conn. Scottsbluff					Via Conn. Riverton					30 Day Round Trip Fare \$137.00 6 30 2 27 517/501/507 9 Via Conn. Riverton-Denver									
					Via Conn. Scottsbluff					Via Conn. Riverton					2 40 10 16 515/509 6 Via Conn. Farmington									
					Via Conn. Scottsbluff					Via Conn. Riverton					POWELL-CODY, WYO. \$17.00									
					Via Conn. Scottsbluff					Via Conn. Riverton					6 30 7 42 517 C 1 2 40 7 36 515/23 P 1 Via Conn. Billings									
					Via Conn. Scottsbluff					Via Conn. Riverton					RIVERTON, WYO. \$28.00									
					Via Conn. Scottsbluff					Via Conn. Riverton					6 30 8 39 517 3 2 40 8 46 515/23 3 Via Conn. Billings									
					Via Conn. Scottsbluff					Via Conn. Riverton					ROCK SPRINGS, WYO. \$36.00									
					Via Conn. Scottsbluff					Via Conn. Riverton					6 30 9 39 517 4 2 40 10 08 515/23 4 Via Conn. Billings									
					Via Conn. Scottsbluff					Via Conn. Riverton					SALT LAKE CITY, UTAH \$42.00									
					Via Conn. Scottsbluff					Via Conn. Riverton					6 30 10 26 517 5 2 40 5 05 515 2									
					Via Conn. Scottsbluff					Via Conn. Riverton					SIDNEY, MONT. \$30.00									
					Via Conn. Scottsbluff					Via Conn. Riverton					2 40 5 35 515/32 3 Via Conn. Billings									
					Via Conn. Scottsbluff					Via Conn. Riverton					WILLISTON, N.D. (CST) \$34.00									
					Via Conn. Scottsbluff					Via Conn. Riverton					2 40 7 08 515/32/34 4 Via Conn. Billings-Sidney									
					Via Conn. Scottsbluff					Via Conn. Riverton					WOLF POINT, MONT. \$26.00									
					Via Conn. Scottsbluff					Via Conn. Riverton					1 11 4 48 512/34 3 Via Conn. Great Falls									
					Via Conn. Scottsbluff					Via Conn. Riverton					WORLAND, WYO. \$23.00									
					Via Conn. Scottsbluff					Via Conn. Riverton					6 30 8 10 517 2 2 40 8 12 515/23 2 Via Conn. Billings									
					Via Conn. Scottsbluff					Via Conn. Riverton					FROM LINCOLN, NEBR. (CST)									
					Via Conn. Scottsbluff					Via Conn. Riverton					Reservations 432-5391 Air Cargo 432-2833									
					Via Conn. Scottsbluff					Via Conn. Riverton					TO									
					Via Conn. Scottsbluff					Via Conn. Riverton					ALBUQUERQUE, N.M. (MST) \$69.00									
					Via Conn. Scottsbluff					Via Conn. Riverton					30 Day Round Trip Fare \$104.00 7 55 10 59 569/591 2 Via Conn. Denver									
					Via Conn. Scottsbluff					Via Conn. Riverton					2 30 9 20 565/509/515 3 Via Conn. Denver-Farmington									
					Via Conn. Scottsbluff					Via Conn. Riverton					DURANGO, COLO. (MDT) \$58.00									
					Via Conn. Scottsbluff					Via Conn. Riverton					4 16 8 54 553/509 3 Via Conn. Denver									
					Via Conn. Scottsbluff					Via Conn. Riverton					EL PASO, TEX. (MST) \$88.00									
					Via Conn. Scottsbluff					Via Conn. Riverton					30 Day Round Trip Fare \$130.00 7 55 12 28 569/591 4 Via Conn. Denver									
					Via Conn. Scottsbluff					Via Conn. Riverton					4 16 10 57 553/509/515 7 Via Conn. Denver-Farmington									
					Via Conn. Scottsbluff					Via Conn. Riverton					ST. JOSEPH, MO. \$15.00									
					Via Conn. Scottsbluff					Via Conn. Riverton					6 30 7 07 660 0 12 28 1 30 552 1 9 42 10 40 564 1									
					Via Conn. Scottsbluff					Via Conn. Riverton					SALT LAKE CITY, UTAH (MST) \$66.00									
					Via Conn. Scottsbluff					Via Conn. Riverton					7 55 3 15 569/573 6 Via Conn. Denver									
					Via Conn. Scottsbluff					Via Conn. Riverton					4 16 11 01 553/577 4 Via Conn. Denver									
					Via Conn. Scottsbluff					Via Conn. Riverton					SANTA FE, N.M. (MST) \$66.00									
					Via Conn. Scottsbluff					Via Conn. Riverton					7 55 10 35 569/591 1 Via Conn. Denver									
					Via Conn. Scottsbluff					Via Conn. Riverton					4 16 8 56 553/583 5 Via Conn. Denver									

"21" FARE



40% Discount — Young travelers (age 12-22) holding a Frontier "21" Fare Identification Card may travel on any flight, anywhere on Frontier's system with confirmed reservations.

\$3.00 COURIER SERVICE



Almost any package-1 to 5 lbs. goes anywhere on Frontier's system for \$3.00! For information call

FRONTIER AIRLINES

FRONTIER AIRLINES SYSTEM TIMETABLE

EFFECTIVE APRIL 24, 1966
ALL TIMES SHOWN ARE LOCAL

Leave	Arrive	Flight	Freq.	Stops	Leave	Arrive	Flight	Freq.	Stops	Leave	Arrive	Flight	Freq.	Stops	Leave	Arrive	Flight	Freq.	Stops	Leave	Arrive	Flight	Freq.	Stops
FROM LARAMIE, WYO. CONTINUED					HAVRE, MONT. \$19.00					CASPER, WYO. (MST) \$45.00					GREAT FALLS, MONT. (MST) \$64.00									
TO					1 11 3 11 512/34 1 Via Conn. Great Falls					9 20 2 38 561/526 5 Via Conn. Denver					4 16 11 55 553/522/516 11 Via Conn. Denver-Riverton									
TUCSON, ARIZ. \$69.00					JACKSON, WYO. \$28.00					HASTINGS, NEBR. \$11.00					CHADRON, NEBR. (MST) \$33.00									
30 Day Round Trip Fare \$102.00 10 11 3 21 501/507 4 Via Conn. Denver					2 40 4 07 515 1 6 30 10 12 517/502 4 Via Conn. Riverton					7 53 9 00 51 1 4 16 4 43 553 0					9 20 11 55 561/42 4 Via Conn. Scottsbluff									
1 20 11 16 5/509 6 Via Conn. Denver					DC-3 Equipment Jackson-Riverton Effective June 1					JACKSON, WYO. (MST) \$62.00					8 31 10 55 563/48 4 Via Conn. Scottsbluff									
WORLAND, WYO. \$25.00					MINOT, N.D. (CST) \$39.00					CHEYENNE, WYO. (MST) \$36.00					KANSAS CITY, MO./KAN. (CST) \$16.00									
7 37 9 40 522/516 2 Via Conn. Riverton					2 40 8 01 515/32/34 5 Via Conn. Billings-Sidney					9 20 12 41 561/6 4 Via Conn. Denver					6 30 7 30 660 1 9 56 11 09 562 1 12 28 1 55 552 2 2 12 2 55 560 0 5 15 5 58 668 0 8 37 9 20 568 0 9 42 11 06 564 2									
FROM LEWISTOWN, MONT. (MST)					PHOENIX, ARIZ. \$92.00					KEARNEY, NEBR. \$14.00					LARAMIE, WYO. (MST) \$42.00									
Reservations 538-9621 (MST)					30 Day Round Trip Fare \$137.00 6 30 2 27 517/501/507 9 Via Conn. Riverton-Denver					4 16 5 06 553 1 Via Conn. Denver					9 20 1 12 561/6 5 Via Conn. Denver									
TO					ROCK SPRINGS, WYO. \$36.00					McCOOK, NEBR. \$34.00					NORTH PLATTE, NEBR. \$19.00									
ALBUQUERQUE, N.M. \$81.00					6 30 7 42 517 C 1 2 40 7 36 515/23 P 1 Via Conn. Billings					7 00 9 22 569/51 3 Via Conn. Lincoln					9 20 10 26 561 1 8 31 9 37 563 1									
30 Day Round Trip Fare \$124.00 6 30 2 31 517 8 2 40 9 20 515 5					RIVERTON, WYO. \$28.00					LARAMIE, WYO. (MST) \$52.00					OMAHA, NEBR. \$ 8.00									
ASPEN, COLO. (MDT) \$59.00					6 30 8 39 517 3 2 40 8 46 515/23 3 Via Conn. Billings					7 00 1 12 569/6 3 Via Conn. Denver					9 56 10 16 562 0 12 28 12 48 552 0 8 40 9 10 54 0 9 42 10 02 564 0									
Served Through Grand Junction 6 30 1 49 517 6 2 40 8 19 515 3					ROCK SPRINGS, WYO. \$36.00					OMAHA, NEBR. \$16.00					PHOENIX, ARIZ. (MST) \$83.00									
BILLINGS, M																								

FRONTIER AIRLINES SYSTEM TIMETABLE

EFFECTIVE APRIL 24, 1966
ALL TIMES SHOWN ARE LOCAL

Leave	Arrive	Flight	Freq.	Stops	Leave	Arrive	Flight	Freq.	Stops	Leave	Arrive	Flight	Freq.	Stops	Leave	Arrive	Flight	Freq.	Stops	Leave	Arrive	Flight	Freq.	Stops
FROM LINCOLN, NEBR. CONTINUED					WILLISTON, N.D. (CST) \$17.00					MILES CITY, MONT. (MST) \$24.00					MONTROSE, COLO. (MDT) \$14.00									
9 20 10 12 561 8 31 9 23 563					4 34 7 08 32/34 Via Conn. Sidney					9 32 11 01 33/31 Via Conn. Sidney					4 50 6 43 574									
TO SCOTTSBLUFF, NEBR. (MST) \$32.00					FROM MINOT, N. D. (CST) \$17.00					PHOENIX, ARIZ. (MST) \$107.00					PHOENIX, ARIZ. \$45.00									
9 20 10 12 561 8 31 9 23 563					30 Day Round Trip Fare \$149.00 6 28 2 27 591/507 Via Conn. Denver					30 Day Round Trip Fare \$149.00 6 28 2 27 591/507 Via Conn. Denver					7 46 10 35 511/519 Via Conn. Farmington									
SIDNEY, NEBR. (MST) \$30.00					TO ALBUQUERQUE, N.M. (MST) \$95.00					RAPID CITY, S.D. (MST) \$35.00					RAPID CITY, S. D. \$50.00									
7 53 10 08 51 2 30 4 05 565/54 Via Conn. Denver					30 Day Round Trip Fare \$136.00 6 28 10 59 591 3 50 9 21 509/583 Via Conn. Denver					6 28 7 05 591 3 50 4 23 509					4 50 8 51 574/510 Via Conn. Denver									
TUCSON, ARIZ. (MST) \$89.00					BILLINGS, MONT. (MST) \$33.00					SANTA FE, N. M. (MST) \$90.00					SALT LAKE CITY, UTAH \$21.00									
30 Day Round Trip Fare \$127.00 7 55 3 21 569/507 Via Conn. Denver					9 32 12 00 33/31 Via Conn. Sidney					6 28 10 35 591 3 50 8 56 509/583 Via Conn. Denver					2 02 3 15 573 4 50 6 52 574/516 Via Conn. Grand Junction									
4 16 11 16 553/509 Via Conn. Denver					BISMARCK, N.D. \$12.00					SCOTTSBLUFF, NEBR. (MST) \$48.00					VERNAL, UTAH \$13.00									
FROM McCOOK, NEBR. (CST) \$20.00					CHEYENNE, WYO. (MST) \$54.00					SIDNEY, MONT. (MST) \$16.00					FROM MONTROSE-DELTA, COLO. (MDT) \$9.00									
Reservations 345-4736					6 28 12 41 591/6 Via Conn. Denver					9 32 9 49 33					Reservations 249-4236									
TO COLUMBUS, NEBR. \$20.00					TUCSON, ARIZ. (MST) \$113.00					TO ASPEN, COLO. \$9.00					COLORADO SPRINGS, COLO. \$21.00									
6 09 8 01 54					30 Day Round Trip Fare \$162.00 6 28 3 21 591/507 Via Conn. Denver					Served Through Grand Junction 2 01 2 19 573					11 00 1 07 572/507 Via Conn. Denver									
DENVER, COLO. (MDT) \$20.00					WOLF POINT, MONT. (MST) \$21.00					DENVER, COLO. \$21.00					GRAND JUNCTION, COLO. \$9.00									
10 09 12 05 51					9 32 10 21 33 11 47 12 19 510					11 00 11 58 572 6 49 7 32 574 9 05 9 48 576					2 01 2 19 573									
HASTINGS, NEBR. \$14.00					FROM MOAB, UTAH (MST) \$13.00					GRAND ISLAND, NEBR. \$14.00					JACKSON, WYO. (MST) \$50.00									
6 09 7 14 54					Reservations 253-6401					8 38 9 10 562 2 00 2 32 566 8 24 8 56 564					10 33 12 04 561 5 03 6 05 567 9 44 11 15 563									
KANSAS CITY, MO./KAN. \$34.00					TO ALAMOGORDO, N.M. \$44.00					GRAND ISLAND, NEBR. \$14.00					KANSAS CITY, MO./KAN. (CST) \$34.00									
6 09 9 20 54/568 Via Conn. Lincoln					7 46 12 00 511/591 Via Conn. Albuquerque					8 38 9 10 562 2 00 2 32 566 8 24 8 56 564					8 38 11 09 562 8 24 11 06 564									
KEARNEY, NEBR. \$12.00					ALBUQUERQUE, N.M. \$30.00					GRAND ISLAND, NEBR. \$14.00					KANSAS CITY, MO./KAN. (CST) \$34.00									
6 09 6 45 54					7 46 9 26 511 5 14 9 20 574/515 Via Conn. Grand Junction					8 38 9 10 562 2 00 2 32 566 8 24 8 56 564					8 38 11 09 562 8 24 11 06 564									
LINCOLN, NEBR. \$20.00					ASPEN, COLO. (MDT) \$10.00					GRAND ISLAND, NEBR. \$14.00					KANSAS CITY, MO./KAN. (CST) \$34.00									
6 09 8 25 54					Served Through Grand Junction 4 50 6 09 574 9 31 10 50 514					8 38 9 10 562 2 00 2 32 566 8 24 8 56 564					8 38 11 09 562 8 24 11 06 564									
OMAHA, NEBR. \$24.00					DENVER, COLO. (MDT) \$25.00					GRAND ISLAND, NEBR. \$14.00					KANSAS CITY, MO./KAN. (CST) \$34.00									
6 09 9 10 54					7 46* 11 00 511/508 Via Conn. Farmington					8 38 9 10 562 2 00 2 32 566 8 24 8 56 564					8 38 11 09 562 8 24 11 06 564									
SIDNEY, NEBR. (MST) \$15.00					GLASGOW, MONT. (MST) \$24.00					GRAND ISLAND, NEBR. \$14.00					KANSAS CITY, MO./KAN. (CST) \$34.00									
10 09 10 08 51					9 32 11 11 33					8 38 9 10 562 2 00 2 32 566 8 24 8 56 564					8 38 11 09 562 8 24 11 06 564									
FROM MILES CITY, MONT. (MST) \$15.00					GLENDALE, MONT. (MST) \$21.00					GRAND ISLAND, NEBR. \$14.00					KANSAS CITY, MO./KAN. (CST) \$34.00									
Reservations 232-1401					9 32 10 25 33/31 Via Conn. Sidney					8 38 9 10 562 2 00 2 32 566 8 24 8 56 564					8 38 11 09 562 8 24 11 06 564									
TO BILLINGS, MONT. \$15.00					GREAT FALLS, MONT. (MST) \$39.00					GRAND ISLAND, NEBR. \$14.00					KANSAS CITY, MO./KAN. (CST) \$34.00									
11 04 12 00 31					9 32 1 11 33					8 38 9 10 562 2 00 2 32 566 8 24 8 56 564					8 38 11 09 562 8 24 11 06 564									
BISMARCK, N.D. (CST) \$29.00					HAVRE, MONT. (MST) \$34.00					GRAND ISLAND, NEBR. \$14.00					KANSAS CITY, MO./KAN. (CST) \$34.00									
4 34 8 52 32/34 Via Conn. Sidney					9 32 12 24 33					8 38 9 10 562 2 00 2 32 566 8 24 8 56 564					8 38 11 09 562 8 24 11 06 564									
GLENDALE, MONT. \$11.00					JACKSON, WYO. (MST) \$49.00					GRAND ISLAND, NEBR. \$14.00					KANSAS CITY, MO./KAN. (CST) \$34.00									
4 34 5 08 32					9 32 4 07 33/515 Via Conn. Great Falls					8 38 9 10 562 2 00 2 32 566 8 24 8 56 564					8 38 11 09 562 8 24 11 06 564									
GREAT FALLS, MONT. \$28.00					LEWISTOWN, MONT. (MST) \$39.00					GRAND ISLAND, NEBR. \$14.00					KANSAS CITY, MO./KAN. (CST) \$34.00									
11 04 1 37 31/512 Via Conn. Billings					9 32 2 35 33/515 Via Conn. Great Falls					8 38 9 10 562 2 00 2 32 566 8 24 8 56 564					8 38 11 09 562 8 24 11 06 564									
MINOT, N.D. (CST) \$24.00					GRAND JUNCTION, COLO. (MDT) \$10.00					GRAND ISLAND, NEBR. \$14.00					KANSAS CITY, MO./KAN. (CST) \$34.00									
4 34 8 01 32/34 Via Conn. Sidney					4 50 6 09 574 9 31 10 50 514					8 38 9 10 562 2 00 2 32 566 8 24 8 56 564					8 38 11 09 562 8 24 11 06 564									
SIDNEY, MONT. \$14.00					TO PHOENIX, ARIZ. (MST) \$49.00					GRAND ISLAND, NEBR. \$14.00					KANSAS CITY, MO./KAN. (CST) \$34.00									
4 34 5 35 32					11 00 2 02 572/560 Via Conn. Denver					8 38 9 10 562 2 00 2 32 566 8 24 8 56 564					8 38 11 09 562 8 24 11 06 564									



FAMILY PLAN . . .
Family Savings — First member pays full first class fare, second member pays 1/2, and all other members up to age 22 pay only 1/4 fare. Travel any day of the week and on separate flights (within 24 hours) if desired.

FRONTIER AIRLINES SYSTEM TIMETABLE

EFFECTIVE APRIL 24, 1966
ALL TIMES SHOWN ARE LOCAL

Leave	Arrive	Flight	Freq.	Stops	Leave	Arrive	Flight	Freq.	Stops	Leave	Arrive	Flight	Freq.	Stops	Leave	Arrive	Flight	Freq.	Stops	Leave	Arrive	Flight	Freq.	Stops
FROM MONTROSE-DELTA, CONTINUED					SCOTTSBLUFF, NEBR. (MST) \$16.00					DENVER, COLO. (MDT) \$38.00					RIVERTON, WYO. (MST) \$57.00									
TO SALT LAKE CITY, UTAH (MST) \$25.00					10 33 10 12 561 9 44 9 23 563					7 10 9 29 51/569 Via Conn. Lincoln					3 40 8 47 567/522 Via Conn. Denver									
2 01 3 15 573					FROM OMAHA, NEBR. (CST) \$16.00					7 10 12 05 51 8 48 12 04 561 3 40 6 05 567 3 45 6 26 553 7 55 11 15 563					ST. JOSEPH, MO. \$15.00									
VERNAL, UTAH (MST) \$16.00					Reservations 346-8900 Air Cargo 346-5270					DURANGO, COLO. (MDT) \$61.00					1 02 1 30 552 10 12 10 40 564									
2 01 2 34 573					ALAMOGORDO, N. M. (MST) \$85.00					3 40 8 54 567/509 Via Conn. Denver					SALT LAKE CITY, UTAH (MST) \$70.00									
FROM NORTH PLATTE, NEBR. \$16.00					7 10 12 00 51/569/591 Via Conn. Lincoln-Denver					3 40 11 52 567/522/23 Via Conn. Denver-Riverton					8 48 3 15 561/573 Via Conn. Denver									
Reservations 532-3600 (CST) Air Cargo 532-1762					3 40 10 30 567/509/515 Via Conn. Denver-Farmington					GRAND ISLAND, NEBR. \$14.00					SANTA FE, N. M. (MST) \$67.00									
TO ALLIANCE, NEBR. (MST) \$16.00					30 Day Round Trip Fare \$116.30					8 48 9 45 561 3 40 4 17 567 7 55 8 56 563					3 40 8 56 567/583 Via Conn. Denver									
10 33 11 24 561/42 Via Conn. Scottsbluff					7 10 10 59 51/569/591 Via Conn. Lincoln-Denver					GRAND JUNCTION, COLO. (MDT) \$54.00					SCOTTSBLUFF, NEBR. (MST) \$35.00									
9 44 10 24 563/48 Via Conn. Scottsbluff					3 40 9 20 567/509/515 Via Conn. Denver-Farmington					8 48 2 19 561/573 Via Conn. Denver					8 48 10 12 561 7 55 9 23 563									
CHADRON, NEBR. (MST) \$21.00					ALLIANCE, NEBR. (MST) \$35.00					GREAT FALLS, MONT. \$67.00					SIDNEY, NEBR. (MST) \$35.00									
10 33 11 55 561/42 Via Conn. Scottsbluff					8 48 11 24 561/42 Via Conn. Scottsbluff					3 40 11 55 567/522/516 Via Conn. Denver-Riverton					7 10 10 08 51									
9 24 10 55 563/48 Via Conn. Scottsbluff					7 55 10 24 563/48 Via Conn. Scottsbluff					HASTINGS, NEBR. \$15.00					TUCSON, ARIZ. (MST) \$92.00									
CHEYENNE, WYO. (MST) \$21.00					10 33 12 41 561/6 Via Conn. Denver					8 48 12 17 561/530 Via Conn. Denver					30 Day Round Trip Fare \$134.00									
10 33 12 41 561/6 Via Conn. Denver					5 03 7 03 567/522 Via Conn. Denver					JACKSON, WYO. (MST) \$64.00					8 48 3 21 561/507 Via Conn. Denver									
DENVER, COLO. (MDT) \$23.00					10 33 12 04 561 5 03 6 05 567 9 44 11 15 563					Discontinued After May 31 Effective June 1					3 40 11 16 567/509 Via Conn. Denver									
10 33 12 04 561 5 03 6 05 567 9 44 11 15 563					GRAND ISLAND, NEBR. \$14.00					KANSAS CITY, MO./KAN. (CST) \$16.00					WORLAND, WYO. (MST) \$60.00									
8 38 9 10 562 2 00 2 32 566 8 24 8 56 564					JACKSON, WYO. (MST) \$50.00					10 26 11 09 562 1 02 1 55 552 10 12 11 06 564					3 40 9 40 567/522/516 Via Conn. Denver-Riverton									
10 33 12 17 561/530 Via Conn. Denver					Discontinued After May 31 Effective June 1					KEARNEY, NEBR. \$17.00					FROM PHOENIX, ARIZ. (MST) \$21.00									
10 33 12 17 561/530 Via Conn. Denver					10 33 3 40 561/526 Discontinued After May 31					7 10 9 22 51 3 45 5 06 553					Reservations 275-7521 Air Cargo 275-6443									
KANSAS CITY, MO./KAN. (CST) \$34.00					ASPEN, COLO. (MDT) \$54.00					LARAMIE, WYO. (MST) \$45.00					TO ALAMOGORDO, N. M. \$45.00									
8 38 11 09 562 8 24 11 06 564					Served Through Grand Junction 8 48 2 19 561/573 Via Conn. Denver					8 48 1 12 561/6 Via Conn. Denver					6 20 12 00 582/591 Via Conn. Albuquerque									
8 38 11 09 562 8 24 11 06 564					3 40 8 15 567/575 Via Conn. Denver					3 40 7 31 567/522 Via Conn. Denver					12 05 3 30 588/517 Via Conn. Albuquerque									
LINCOLN, NEBR. \$19.00					CASPER, WYO. (MST) \$47.00					LINCOLN, NEBR. \$8.00					ALAMOSA, COLO. (MDT) \$43.00									
8 38 9 41 562 8 24 9 27 564					8 48 2 38 561/526 Via Conn. Denver					7 10 7 40 51 8 48 9 09 561 3 45 4 06 553 7 55 8 16 563					6 45 10 40 518									
8 38 9 41 562 8 24 9 27 564					3 40 8 09 567/522 Via Conn. Denver					McCOOK, NEBR. \$24.00					ALBUQUERQUE, N.M. \$28.10									
OMAHA, NEBR. \$22.00					CHADRON, NEBR. (MST) \$35.00					30 Day Round Trip Fare \$43.70					30 Day Round Trip Fare \$43.70									
8 38 10 16 562 2 00 3 11 566 8 24 10 02 564					8 48 11 55 561/42 Via Conn. Scottsbluff					7 10 10 06 51					6 20 8 30 582 6 50 9 26 508/511 Via Conn. Farmington									
8 38 10 16 562 2 00 3 11 566 8 24 10 02 564					CHEYENNE, WYO. (MST) \$38.00					NORTH PLATTE, NEBR. \$22.00					12 05 2 15 588 2 00 4 12 516 5 40 7 35 586 6 45 9 20 518/515 Via Conn. Farmington									
PHOENIX, ARIZ. (MST) \$69.00					30 Day Round Trip Fare \$98.00					PHOENIX, ARIZ. (MST) \$86.00					ALLIANCE, NEBR. \$69.00									
10 33 2 27 561/507 Via Conn. Denver					10 33 2 27 561/507 Via Conn. Denver					30 Day Round Trip Fare \$121.00					30 Day Round Trip Fare \$98.00									
6 49 10 16 574/509 Via Conn. Denver					5 03 10 16 567/509 Via Conn. Denver					8 48 2 27 561/507 Via Conn. Denver					4 40 10 24 510/48 Via Conn. Denver									
PUEBLO, COLO. \$21.00					RAPID CITY, S.D. (MST) \$27.00					PUEBLO, COLO. (MDT) \$48.00					ASPEN, COLO. (MDT) 45.00									
11 00 1 21 572/19 Via Conn. Denver					10 33 12 37 561/42 Via Conn. Scottsbluff					7 10 1 21 51/569/19 Via Conn. Lincoln-Denver					Served Through Grand Junction 6 50 10 19 508/512 Via Conn. Farmington									
6 49 8 56 574/583 Via Conn. Denver					5 03 8 51 567/510 Via Conn. Denver					3 40 8 56 567/583 Via Conn. Denver					6 45 10 50 518/514 Via Conn. Farmington									
9 05 10 48 576/593 Via Conn. Denver					9 44 11 37 563/48 Via Conn. Scottsbluff					RAPID CITY, S.D. (MST) \$43.00					BILLINGS, MONT. \$91.00									
RAPID CITY, S. D. (MST) \$50.00					ST. JOSEPH, MO. \$30.00					30 Day Round Trip Fare \$128.00					30 Day Round Trip Fare \$128.00									
11 00 12 37 572/508 Via Conn. Denver					8 38 1 30 562/552 Via Conn. Omaha					8 48 12 37 561/42 Via Conn. Scottsbluff					6 50 12 23 508/512 Via Conn. Farmington									
6 49 8 51 574/510 Via Conn. Denver					8 24 10 40 564					7 55 11 37 563/48 Via Conn. Scottsbluff					2 00 10 37 516									

FRONTIER AIRLINES SYSTEM TIMETABLE

EFFECTIVE APRIL 24, 1966
ALL TIMES SHOWN ARE LOCAL

Leave	Arrive	Flight	Freq.	Stops	Leave	Arrive	Flight	Freq.	Stops	Leave	Arrive	Flight	Freq.	Stops	Leave	Arrive	Flight	Freq.	Stops	Leave	Arrive	Flight	Freq.	Stops
FROM PHOENIX, ARIZ. CONTINUED					GRAND JUNCTION, COLO. (MDT) \$45.00					RAPID CITY, S.D. \$79.00					BILLINGS, MONT. \$10.00									
					6 50 10 19 508/512 2					10 28 11 06 4 C 0					10 16 10 37 516 P 0									
					6 45 10 50 518/514 4					6 50 12 41 508 4					7 49 9 26 517/501 C 2									
					Via Conn. Farmington					4 40 8 51 510 2					Via Conn. Riverton									
					Via Conn. Farmington					2 00 8 54 516 7					7 39 9 41 23/521 P 2									
TO					GREAT FALLS, MONT. \$93.00					RIVERTON, WYO. \$77.00					CASPER, WYO. \$22.00									
BISMARCK, N.D. (CST) \$100.00					30 Day Round Trip Fare \$139.00					30 Day Round Trip Fare \$110.00					7 49 10 29 517/501 C 4									
6 50 2 42 508 5					6 50 1 37 508/512 7					2 00 8 54 516 7					Via Conn. Riverton									
4 40 10 52 510 3					Via Conn. Farmington					6 50 10 18 508/512 3					6 45 9 26 517/501 C 2									
CASPER, WYO. \$72.00					30 Day Round Trip Fare \$102.00					SALT LAKE CITY, UTAH \$54.00					CHEYENNE, WYO. \$35.00									
6 50 2 38 508/526 5					6 50 11 55 516 12					7 Day Round Trip Fare \$56.00					7 49 10 29 517/501 C 4									
Via Conn. Denver					Via Conn. Farmington					6 50 10 18 508/512/572 4					Via Conn. Riverton									
CHADRON, NEBR. \$74.00					30 Day Round Trip Fare \$105.00					6 45 11 01 518/514/577 5					7 39 10 25 23/521 P 3									
4 40 10 55 510/48 5					Via Conn. Denver					Via Conn. Farmington-Grand Junction					Via Conn. Riverton									
CHEYENNE, WYO. \$59.00					30 Day Round Trip Fare \$85.00					SANTA FE, N.M. \$30.00					COLORADO SPRINGS, COLO. (MDT) \$48.00									
6 50 12 41 508/6 4					6 50 3 11 508/512/34 8					6 20 9 04 582 3					7 49 1 07 517/501/507 C 6									
4 40 9 11 510/48 2					Via Conn. Denver					Via Conn. Albuquerque					Via Conn. Riverton-Denver									
CODY-POWELL, WYO. \$87.00					30 Day Round Trip Fare \$122.00					SCOTTSBLUFF, NEBR. \$66.00					DENVER, COLO. (MDT) \$43.00									
2 00 10 10 516 P 9					12 05 9 20 588/592/568 7					30 Day Round Trip Fare \$94.00					7 49 12 03 517/501 C 5									
COLORADO SPRINGS, COLO. (MDT) \$51.00					30 Day Round Trip Fare \$89.00					6 50 6 29 508/564 4					Via Conn. Riverton									
6 20 11 21 582 5					Via Conn. Denver					4 40 9 50 510/48 3					7 39 11 58 23/521 P 4									
4 40 7 29 510 0					Via Conn. Denver					DISCOVER AMERICA!					Via Conn. Riverton									
COLUMBUS, NEBR. (CST) \$83.00					30 Day Round Trip Fare \$114.00					Frontier Airlines flies to 9 of the Nation's great National Parks and offers you unparalleled scenic attractions in the Great West. Low cost all-expense package plans available.					EL PASO, TEX. \$94.00									
6 50 7 56 508/54 8					Via Conn. Denver					2 00 11 23 516 11					30 Day Round Trip Fare \$138.00									
CORTEZ, COLO. (MDT) \$35.00					Service to Cortez is Temporarily Suspended Due to Runway Construction. Service is Expected to Resume Approximately June 15.					LARAMIE, WYO. \$63.00					7 49 3 57 517 C 8									
6 50 11 01 508 2					6 50 1 12 508/6 5					30 Day Round Trip Fare \$90.00					FARMINGTON, N.M. \$66.00									
6 45 10 06 518 3					Via Conn. Denver					6 50 4 05 508/54 4					7 49 1 37 517 C 5									
DURANGO, COLO. (MDT) \$35.00					30 Day Round Trip Fare \$71.00					SILVER CITY, N.M. \$24.00					GRAND JUNCTION, COLO. (MDT) \$54.00									
6 50 10 01 508 2					12 05 8 27 588/592/568 6					6 20 7 39 582 1					7 49 1 49 517 C 4									
6 45 10 06 518 3					Via Conn. Farmington					2 00 3 22 516 1					10 28 1 37 4/512 C 2									
FARMINGTON, N.M. \$31.00					30 Day Round Trip Fare \$114.00					TUCSON, ARIZ. \$11.00					10 16 11 55 516 P 2									
6 50 8 22 508 1					6 50 2 02 508/560 4					6 20 6 51 582 0					JACKSON, WYO. \$22.00									
6 45 8 30 518 2					Via Conn. Denver					7 10 7 55 181 0					7 49 10 12 517/502 C 2									
FLAGSTAFF, ARIZ. \$14.00					30 Day Round Trip Fare \$98.00					11 10 11 41 519 0					Via Conn. Riverton									
6 50 7 23 508 0					6 50 1 53 508/566 4					2 00 2 31 516 0					DC-3 Equipment Riverton-Jackson Effective June 1									
12 05 12 38 588 0					Via Conn. Denver					2 50 3 21 507 0					KANSAS CITY, MO./KAN. (CST) \$76.00									
6 45 7 18 518 0					12 05 8 17 588/592/564 7					4 40 5 11 685 0					7 49 2 55 517/501/560 C 7									
GALLUP, N.M. \$25.00					30 Day Round Trip Fare \$121.00					5 40 6 11 586 0					Via Conn. Riverton-Denver									
6 50 9 22 508/511 2					6 50 9 26 518/514 4					7 40 8 25 185 0					LARAMIE, WYO. \$31.00									
Via Conn. Farmington					Via Conn. Farmington					9 45 10 30 187 0					7 49 10 05 517/501 C 3									
12 05 1 37 588 2					Via Conn. Farmington-Grand Junction					10 45 11 16 509 0					Via Conn. Riverton									
GLASGOW, MONT. \$103.00					30 Day Round Trip Fare \$155.00					WILLISTON, N.D. (CST) \$109.00					LEWISTOWN, MONT. \$17.00									
6 50 4 13 508/512/34 9					6 50 10 53 508/512/572 3					30 Day Round Trip Fare \$151.00					10 28 1 06 4/512 C 1									
Via Conn. Farmington-Grand Junction					Via Conn. Farmington-Grand Junction					4 40 12 19 510 5					Via Conn. Billings									
GRAND ISLAND, NEBR. (CST) \$78.00					30 Day Round Trip Fare \$114.00					WINSLOW, ARIZ. \$17.00					PHOENIX, ARIZ. \$87.00									
6 50 2 32 508/566 5					12 05 10 02 588/592/564 10					12 05 1 04 588 1					30 Day Round Trip Fare \$122.00									
Via Conn. Denver					Via Conn. Albuquerque-Denver					6 45 7 44 518 1					7 49 2 27 517/501/507 C 7									
12 05 8 56 588/592/564 8					30 Day Round Trip Fare \$72.00					WORLAND, WYO. \$82.00					Via Conn. Riverton-Denver									
Via Conn. Albuquerque-Denver					4 40 8 56 510/583 1					30 Day Round Trip Fare \$116.00					RIVERTON, WYO. \$16.00									
					Via Conn. Colorado Springs					2 00 9 40 516 8					7 49 8 39 517 C 1									
															7 39 8 46 23 P 1									
															ROCK SPRINGS, WYO. \$23.00									
															7 49 9 39 517 C 2									
															7 39 10 08 23 P 2									
															SALT LAKE CITY, UTAH \$38.00									
															7 49 10 26 517 C 3									
															7 39 11 52 23 P 4									
															VERNAL, UTAH \$28.00									
															7 39 10 52 23 P 3									
															WORLAND, WYO. \$10.00									
															7 49 8 10 517 C 0									
															7 39 8 12 23 P 0									

FRONTIER AIRLINES SYSTEM TIMETABLE

EFFECTIVE APRIL 24, 1966
ALL TIMES SHOWN ARE LOCAL

Leave	Arrive	Flight	Freq.	Stops	Leave	Arrive	Flight	Freq.	Stops	Leave	Arrive	Flight	Freq.	Stops	Leave	Arrive	Flight	Freq.	Stops	Leave	Arrive	Flight	Freq.	Stops
FROM PUEBLO, COLO. (MDT)					LINCOLN, NEBR. (CST) \$45.00					ASPEN, COLO. (MDT) \$50.00					LINCOLN, NEBR. (CST) \$40.00									
Reservations 544-6461 Air Cargo 948-3323					6 45 12 20 594/552 4					Served Through Grand Junction					5 00 10 41 41/562 5									
					11 05 2 02 582/560 2					9 00 2 19 609/573 3					7 13 12 20 591/552 3									
					Via Conn. Denver					Via Conn. Denver					Via Conn. Scottsbluff									
					Via Conn. Denver					4 30 8 15 509/575 1					Via Conn. Denver									
TO					MONTROSE, COLO. \$21.00					BISMARCK, N.D. (CST) \$27.00					4 30 8 27 509/568 1									
ALAMOGORDO, N.M. (MST) \$47.00					6 45 10 53 594/571/572 3					12 51 2 42 508 0					Via Conn. Denver									
6 45* 12 00 594/591 4					11 05 1 54 582/573 3					9 01 10 52 510 0					4 40 9 27 45/564 5									
Via Conn. Denver					Via Conn. Denver					CHADRON, NEBR. \$12.00					Via Conn. Scottsbluff									
8 22 10 30 583/515 2					6 04 8 58 18/575/576 2					5 00 5 40 41 0					12 51 3 32 508 1									
Via Conn. Albuquerque					Via Conn. Denver-Grand Junction					4 40 5 20 45 0					9 01 11 37 510 1									
ALAMOSA, COLO. \$12.00					OMAHA, NEBR. (CST) \$48.00					CHEYENNE, WYO. \$26.00					MONTROSE, COLO. (MDT) \$50.00									
1 26 2 12 19 0					6 45 12 48 594/552 5					5 00 7 18 41 3					9 00 1 54 609/573 2									
10 54 11 25 593 0					11 05 3 11 582/566 3					9 00 12 41 609/6 1					Via Conn. Denver									
ALBUQUERQUE, N.M. (MST) \$32.00					30 Day Round Trip Fare \$46.90					4 30 7 03 509/522 1					4 30 8 58 509/575/576 2									
6 45* 10 59 594/591 3					Via Conn. Denver					Via Conn. Denver					Via Conn. Denver-Grand Junction									
9 07 9 21 583 1					PHOENIX, ARIZ. (MST) \$49.00					COLORADO SPRINGS, COLO. (MDT) \$39.00					9 00 1 53 609/566 1									
ALAMOGORDO, N.M. (MST) \$47.00					30 Day Round Trip Fare \$72.60					9 00 1 07 609/507 1					4 40 8 17 45/564 3									
6 45* 12 00 594/591 4					11 05 2 27 582/507 1					4 30 8 10 509/95 1					Via Conn. Scottsbluff									
Via Conn. Denver					Via Conn. Colorado Springs					COLUMBUS, NEBR. (CST) \$40.00					9 00 3 11 609/566 3									
8 22 10 30 583/515 2					9 07 11 52 583 4					4 30 10 38 509/564/57 6					4 40 10 02 45/564 6									
Via Conn. Albuquerque					Via Conn. Denver					Via Conn. Denver-Omaha					Via Conn. Scottsbluff									
ALAMOSA, COLO. \$12.00					RAPID CITY, S.D. (MST) \$41.00					DENVER, COLO. (MDT) \$32.00					PHOENIX, ARIZ. \$79.00									
1 26 2 12 19 0					11 05 12 41 582/508 2					5 00 9 05 41 4					30 Day Round Trip Fare \$173.00									
10 54 11 25 593 0					6 04 8 51 18/510 1					7 13 9 20 591 4					9 00 2 27 609/507 2									
ALBUQUERQUE, N.M. (MST) \$32.00					30 Day Round Trip Fare \$46.90					4 30 8 51 18/510 1					Via Conn. Denver									
6 45* 10 59 594/591 3					Via Conn. Denver					6 04 11 01 18/577 2					4 30 10 16 509 4									
9 07 9 21 583 1					SALT LAKE CITY, UTAH (MST) \$35.00					4 30 8 54 509 1					Via Conn. Denver									
9 07 9 21 583 1					6 45 10 18 594/571/512 3					30 Day Round Trip Fare \$126.00					ST. JOSEPH, MO. (CST) \$50.00									
ALAMOGORDO, N.M. (MST) \$47.00					Served Through Grand Junction					7 13 12 28 591 4					7 13 1 30 591/552 5									
6 45 10 05 594/571 2					Via Conn. Denver					4 30 10 57 509/515 5					Via Conn. Denver									
11 05 2 19 582/573 4					Via Conn. Denver					Via Conn. Farmington					4 40 10 40 45/564 7									
6 04 8 15 18/575 1					Via Conn. Denver					FARMINGTON, N.M. \$57.00					Via Conn. Scottsbluff									
Via Conn. Denver					CHEYENNE, WYO. (MST) \$18.00					4 30 8 17 509 2					SANTA FE, N.M. \$63.00									
11 05 12 41 582/6 2					11 05 12 41 582/6 2					30 Day Round Trip Fare \$126.00					7 13 10 35 591 1									
6 04 7 03 18/522 1					Via Conn. Denver					7 13 9 20 591 4					4 30 9 11 509/583 3									
Via Conn. Denver					COLORADO SPRINGS, COLO. \$ 7.00					4 30 10 57 509/515 5					Via Conn. Denver									
6 45 7 01 594 0					11 05 11 21 582 0					Via Conn. Farmington					SCOTTSBLUFF, NEBR. \$18.00									
11 05 11 21 582 0					CORTEZ, COLO. \$25.00					4 30 8 56 45/564 4					5 00 6 36 41 2									
Service to Cortez is Temporarily Suspended Due to Runway Construction. Service is Expected to Resume Approximately June 15.					Service to Cortez is Temporarily Suspended Due to Runway Construction. Service is Expected to Resume Approximately June 15.					6 04 11 01 18/577 2					4 40 6 16 45 2									
					6 45 7 32 594 1					DURANGO, COLO. (MDT) \$55.00					7 13 10 20 591/42 1									
					11 05 11 51 582 1					4 30 8 54 509 1					Via Conn. Denver									
					6 04 6 50 18 0					EL PASO, TEX. \$85.00					4 40 6 48 45 3									
					6 45 7 32 594 1					30 Day Round Trip Fare \$126.00					TUCSON, ARIZ. \$86.00									
					11 05 11 51 582 1					7 13 12 28 591 4					30 Day Round Trip Fare \$126.00									
					6 04 6 50 18 0					4 30 10 57 509/515 5					9 00 3 21 609/507 3									
					DENVER, COLO. \$11.00					4 30 8 56 45/564 4					4 30 11 16 509 5									
					6 45 7 32 594 1					Via Conn. Farmington					Via Conn. Denver									
					11 05 11 51 582 1					FARMINGTON, N.M. \$57.00					WILLISTON, N.D. (CST) \$43.00									
					6 04 6 50 18 0					4 30 8 17 509 2					9 01 12 19 510 2									
					6 45																			

FRONTIER AIRLINES SYSTEM TIMETABLE

EFFECTIVE APRIL 24, 1966
ALL TIMES SHOWN ARE LOCAL

Leave	Arrive	Flight	Freq.	Stops	Leave	Arrive	Flight	Freq.	Stops	Leave	Arrive	Flight	Freq.	Stops	Leave	Arrive	Flight	Freq.	Stops
FROM RIVERTON, WYO. CONTINUED					VERNAL, UTAH \$18.00					VERNAL, UTAH \$11.00					ALAMOSA, COLO. (MDT) \$43.00				
TO ASPEN, COLO. (MDT) \$44.00 Served Through Grand Junction 9 10 1 49 517 2					9 20 10 52 23 1					10 13 10 52 23 0					12 00 5 14 517/18 3 Via Conn. Farmington				
BILLINGS, MONT. \$21.00 9 15 11 06 4 2 9 19 10 37 516 2					WORLAND, WYO. \$10.00 9 15 9 46 4 0 9 19 9 40 516 0					WORLAND, WYO. \$17.00 8 06 9 46 4 1 8 26 9 40 516 1					6 30 10 40 515/518 3 Via Conn. Farmington				
CASPER, WYO. \$12.00 9 00 9 26 501 0 9 15 9 41 521 0					FROM ROCK SPRINGS, WYO. \$10.00 Reservations 362-5522 (MST)					FROM ST. JOSEPH, MO. (CST) \$17.00 Reservations 279-7919					ALBUQUERQUE, N.M. \$48.00 6 10 9 26 570/511 3 Via Conn. Grand Junction				
CHEYENNE, WYO. \$24.00 9 00 10 29 501 2 9 15 10 25 521 1					TO ALBUQUERQUE, N.M. \$61.00 30 Day Round Trip Fare \$93.00 9 46 2 31 517 3					TO DENVER, COLO. (MDT) \$45.40 8 10 12 04 561 5 3 00 6 26 553 4					12 00 2 31 517 2 6 30 9 20 515 2				
CODY-POWELL, WYO. \$16.00 9 15 10 23 4 C 1 9 19 10 10 516 P 1					ASPEN, COLO. (MDT) \$37.00 Served Through Grand Junction 9 46 1 49 517 1					GRAND ISLAND, NEBR. \$21.00 8 10 9 45 561 2 3 00 4 17 553/567 1 Via Conn. Omaha					ASPEN, COLO. (MDT) \$21.00 Served Through Grand Junction 6 10 7 59 570 0 12 00 1 49 517 0 4 00 6 09 574 2 6 30 8 19 515 0				
DENVER, COLO. (MDT) \$32.00 9 00 12 03 501 3 9 15 11 58 521 2					BILLINGS, MONT. \$28.00 8 06 11 06 4 3 8 26 10 37 516 3					CASPER, WYO. \$18.00 8 06 9 26 4/501 1 Via Conn. Riverton 8 26 9 41 516/521 1 Via Conn. Riverton					GREAT FALLS, MONT. \$42.00 10 40 1 37 512 3 7 40 11 55 516 6				
FARMINGTON, N.M. \$53.00 9 10 1 37 517 3					CHEYENNE, WYO. \$21.00 8 06 10 29 4/501 3 Via Conn. Riverton 8 26 10 25 516/521 2 Via Conn. Riverton					CHEYENNE, WYO. \$35.00 6 30 10 29 4/501 5 Via Conn. Riverton 7 40 10 25 516/521 3 Via Conn. Riverton					GUNNISON, COLO. (MDT) \$29.00 6 10 11 18 570/572 2 Via Conn. Grand Junction				
GRAND JUNCTION, COLO. (MDT) \$44.00 9 10 1 49 517 2					CODY-POWELL, WYO. \$23.00 8 06 10 23 4 C 2 8 26 10 10 516 P 2					COLORADO SPRINGS, COLO. (MDT) \$35.00 6 10 1 07 570/507 2 Via Conn. Denver 6 30 10 27 515/576/593 3 Via Conn. Grand Junction-Denver					HAVRE, MONT. \$52.00 10 40 3 11 512/34 4 Via Conn. Great Falls				
GREAT FALLS, MONT. \$35.00 9 15 1 37 4/512 4 Via Conn. Billings 9 19 11 55 516 4					DENVER, COLO. (MDT) \$27.00 8 06 12 03 4/501 4 Via Conn. Riverton 8 26 11 58 516/521 3 Via Conn. Riverton					CORTEZ, COLO. (MDT) \$30.00 Service to Cortez is Temporarily Suspended Due to Runway Construction. Service is Expected to Resume Approximately June 15.					JACKSON, WYO. \$24.00 10 40 11 30 512 3 7 40 11 55 516 6				
JACKSON, WYO. \$14.00 9 20 10 12 502 0 DC-3 Equipment Riverton-Jackson Effective June 1					KANSAS CITY, MO./KAN. (CST) \$64.00 9 00 2 55 501/560 5 Via Conn. Denver					KANSAS CITY, MO./KAN. (CST) \$8.00 7 10 7 30 660 0 1 35 1 55 552 0 10 46 11 06 564 0					KANSAS CITY, MO./KAN. (CST) \$78.00 6 10 1 55 570/552 7 Via Conn. Denver				
LARAMIE, WYO. \$22.00 9 00 10 05 501 1					FARMINGTON, N.M. \$48.00 9 46 1 37 517 2					LINCOLN, NEBR. \$15.00 8 10 9 09 561 1 3 00 4 06 553 1 10 45 11 22 663 0					LARAMIE, WYO. \$35.00 6 30 10 05 4/501 4 Via Conn. Riverton				
LEWISTOWN, MONT. \$28.00 9 15 1 06 4/512 3 Via Conn. Billings 9 19 11 23 516 3					GRAND JUNCTION, COLO. (MDT) \$37.00 9 46 1 49 517 1					DENVER, COLO. (MDT) \$35.00 30 Day Round Trip Fare \$48.20 6 10 8 55 570 1 6 30 12 03 4/501 6 Via Conn. Riverton					LEWISTOWN, MONT. \$42.00 10 40 1 06 512 2 7 40 11 23 516 5				
LINCOLN, NEBR. (CST) \$54.00 9 00 2 02 501/560 4 Via Conn. Denver					GREAT FALLS, MONT. \$42.00 8 06 1 37 4/512 5 Via Conn. Billings 8 26 11 55 516 5					DURANGO, COLO. (MDT) \$36.00 6 10 10 01 570/511/508 3 Via Conn. Grand Junction-Farmington 12 00 4 23 517/18 2 Via Conn. Farmington 6 30 10 06 515/518 2 Via Conn. Farmington					MOAB, UTAH \$21.00 6 10 7 41 570/511 1 Via Conn. Grand Junction 12 00 1 56 517/573 1 Via Conn. Grand Junction 3 35 4 44 574 1				
OMAHA, NEBR. (CST) \$57.00 9 00 3 11 501/566 6 Via Conn. Denver					JACKSON, WYO. \$22.00 8 06 10 12 4/502 1 Via Conn. Riverton DC-3 Equipment Riverton-Jackson Effective June 1					EL PASO, TEX. \$64.40 30 Day Round Trip Fare \$94.00 6 10 12 28 570/511/591 6 Via Conn. Grand Junction-Albuquerque 12 00 3 57 517 4 6 30 10 57 515 4					MONTROSE, COLO. (MDT) \$25.00 6 10 10 53 570/572 1 Via Conn. Grand Junction 3 35 6 43 574 3 6 30 8 58 515/576 1 Via Conn. Grand Junction				
PHOENIX, ARIZ. \$77.00 30 Day Round Trip Fare \$110.00 9 00 2 27 501/507 5 Via Conn. Denver					LARAMIE, WYO. \$18.00 8 06 10 05 4/501 2 Via Conn. Riverton					SCOTTSDUFF, NEBR. (MST) \$42.00 8 10 10 12 561 4					PHOENIX, ARIZ. \$54.00 7 Day Round Trip Fare \$56.00 6 10 10 35 570/511/519 5 Via Conn. Grand Junction-Farmington 6 30 10 16 515/509 3 Via Conn. Farmington				
POWELL-CODY, WYO. \$16.00 9 15 10 23 4 C 1 9 19 10 10 516 P 1					LEWISTOWN, MONT. \$36.00 8 06 1 06 4/512 4 Via Conn. Billings 8 26 11 23 516 4					FROM SALT LAKE CITY, UTAH \$20.00 Reservations 363-6796 (MST) Air Cargo 359-3726					PHOENIX, ARIZ. \$56.00 7 Day Round Trip Fare \$56.00 6 10 10 35 570/511/519 5 Via Conn. Grand Junction-Farmington 6 30 10 16 515/509 3 Via Conn. Farmington				
ROCK SPRINGS, WYO. \$13.00 9 10 9 39 517 0 9 20 10 08 23 0					POWELL-CODY, WYO. \$23.00 8 06 10 23 4 C 2 8 26 10 10 516 P 2					TO ALAMOGORDO, N.M. \$60.00 6 10 12 00 570/511/591 4 Via Conn. Grand Junction-Albuquerque 12 00 3 30 517 3 6 30 10 30 515 3 Via Conn. Farmington					WINSLOW, ARIZ. \$48.00 6 10 9 31 570/511/519 3 Via Conn. Grand Junction-Farmington 12 00 3 56 517/589 4 Via Conn. Albuquerque				
SALT LAKE CITY, UTAH \$26.00 9 10 10 26 517 1 9 20 11 52 23 2					RIVERTON, WYO. \$13.00 8 06 8 48 4 0 8 26 8 54 516 0					FLAGSTAFF, ARIZ. \$51.00 6 10 9 57 570/511/519 4 Via Conn. Grand Junction-Farmington 12 00 4 22 517/589 5 Via Conn. Albuquerque 6 30 9 39 515/509 2 Via Conn. Farmington					WOLF POINT, MONT. \$53.00 10 40 4 48 512/34 6 Via Conn. Great Falls				
TUCSON, ARIZ. \$85.00 30 Day Round Trip Fare \$123.00 9 00 3 21 501/507 6 Via Conn. Denver					SALT LAKE CITY, UTAH \$20.00 9 46 10 26 517 0 10 13 11 52 23 1										WORLAND, WYO. \$33.00 6 30 9 46 4 3 7 40 9 40 516 2				



FRONTIER AIRLINES SYSTEM TIMETABLE

EFFECTIVE APRIL 24, 1966
ALL TIMES SHOWN ARE LOCAL

Leave	Arrive	Flight	Freq.	Stops	Leave	Arrive	Flight	Freq.	Stops	Leave	Arrive	Flight	Freq.	Stops	Leave	Arrive	Flight	Freq.	Stops
FROM SALT LAKE CITY, UTAH CONTINUED					PUEBLO, COLO. (MDT) \$35.00					FROM SANTA FE, N.M. (MST) Reservations YU 3-6397					RAPID CITY, S.D. \$63.00				
TO GALLUP, N.M. \$40.00 6 10 9 22 570/511 3 Via Conn. Grand Junction 12 00 3 20 517/589 3 Via Conn. Albuquerque					3 35 8 56 574/583 6 Via Conn. Denver 6 30 10 48 515/576/593 4 Via Conn. Grand Junction-Denver					TO ALAMOGORDO, N.M. \$24.00 10 41 12 00 591 1 9 03 10 30 583/515 1 Via Conn. Albuquerque					9 10 12 41 582/508 3 Via Conn. Denver 4 06 8 51 592/510 1 Via Conn. Denver				
GLASGOW, MONT. \$53.00 10 40 4 13 512/34 5 Via Conn. Great Falls					RIVERTON, WYO. \$26.00 6 30 8 48 4 2 7 40 8 54 516 1					ALBUQUERQUE, N.M. \$7.20 10 41 10 59 591 0 9 03 9 21 583 0					SALT LAKE CITY, UTAH \$48.00 10 41 6 52 591/516 3 Via Conn. Albuquerque				
GRAND JUNCTION, COLO. (MDT) \$21.00 6 10 7 59 570 0 12 00 1 49 517 0 3 35 6 09 574 2 6 30 8 19 515 0					GREAT FALLS, MONT. \$42.00 10 40 1 37 512 3 7 40 11 55 516 6					ASPEN, COLO. (MDT) \$35.00 Served Through Grand Junction 9 10 2 19 582/573 5 Via Conn. Denver 10 41 6 54 591/516 2 Via Conn. Albuquerque					SILVER CITY, N.M. \$22.00 9 03 10 28 583 1				
GREAT FALLS, MONT. \$42.00 10 40 1 37 512 3 7 40 11 55 516 6					GUNNISON, COLO. (MDT) \$29.00 6 10 11 18 570/572 2 Via Conn. Grand Junction					BISMARCK, N.D. (CST) \$81.00 9 10 2 42 582/508 4 Via Conn. Denver 4 06 10 52 592/510 2 Via Conn. Denver					TUCSON, ARIZ. \$29.00 10 41 6 11 591/589/586 5 Via Conn. Albuquerque-Phoenix 9 03 11 15 583 2				
HAYRE, MONT. \$52.00 10 40 3 11 512/34 4 Via Conn. Great Falls					JACKSON, WYO. \$24.00 10 40 11 30 512 3 6 30 10 12 4/502 3 Via Conn. Riverton DC-3 Equipment Riverton-Jackson Effective June 1 1 45 3 06 12 0 Effective June 1 5 25 6 46 112 0 Effective June 1					COLORADO SPRINGS, COLO. (MDT) \$28.00 9 10 11 21 582 1 4 06 8 10 592/95 1 Via Conn. Denver					WILLISTON, N.D. (CST) \$95.00 4 06 12 19 592/510 4 Via Conn. Denver				
JACKSON, WYO. \$24.00 10 40 11 30 512 3 6 30 10 12 4/502 3 Via Conn. Riverton DC-3 Equipment Riverton-Jackson Effective June 1 1 45 3 06 12 0 Effective June 1 5 25 6 46 112 0 Effective June 1					KANSAS CITY, MO./KAN. (CST) \$78.00 6 10 1 55 570/552 7 Via Conn. Denver					EL PASO, TEX. \$28.00 10 41 12 28 591 2 9 03 10 57 583/515 2 Via Conn. Albuquerque					WINSLOW, ARIZ. \$26.00 10 41 3 56 591/589 2 Via Conn. Albuquerque				
LEWISTOWN, MONT. \$42.00 10 40 1 06 512 2 7 40 11 23 516 5					LARAMIE, WYO. \$35.00 6 30 10 05 4/501 4 Via Conn. Riverton					DENVER, COLO. (MDT) \$35.00 30 Day Round Trip Fare \$57.40 9 10 11 51 582 2 4 06 6 10 592 0					FROM SCOTTSDUFF, NEBR. \$28.00 Reservations 635-2067 (MST)				
LINCOLN, NEBR. (CST) \$66.00 6 10 12 20 570/552 4 Via Conn. Denver					LEWISTOWN, MONT. \$42.00 10 40 1 06 512 2 7 40 11 23 516 5					EL PASO, TEX. \$28.00 10 41 12 28 591 2 9 03 10 57 583/515 2 Via Conn. Albuquerque					TO ALLIANCE, NEBR. \$8.00 11 00 11 24 42 0 10 00 10 24 48 0				
MOAB, UTAH \$21.00 6 10 7 41 570/511 1 Via Conn. Grand Junction 12 00 1 56 517/573 1 Via Conn. Grand Junction 3 35 4 44 574 1					LEWISTOWN, MONT. \$28.00 9 15 1 06 4/512 3 Via Conn. Billings 9 19 11 23 516 3					FARMINGTON, N.M. \$22.00 10 41 5 08 591/516 1 Via Conn. Albuquerque					BISMARCK, N.D. (CST) \$41.00 11 00 2 42 42/508 3 Via Conn. Rapid City				
MONTROSE, COLO. (MDT) \$25.00 6 10 10 53 570/572 1 Via Conn. Grand Junction 3 35 6 43 574 3 6 30 8 58 515/576 1 Via Conn. Grand Junction					PHOENIX, ARIZ. \$77.00 30 Day Round Trip Fare \$110.00 9 00 2 27 501/507 5 Via Conn. Denver					FLAGSTAFF, ARIZ. \$30.00 10 41 4 22 591/589 3 Via Conn. Albuquerque					CHADRON, NEBR. \$12.00 11 00 11 55 42 1 10 00 10 55 48 1				
OMAHA, NEBR. (CST) \$70.00 6 10 12 48 570/552 5 Via Conn. Denver					PHOENIX, ARIZ. \$54.00 7 Day Round Trip Fare \$56.00 6 10 10 35 570/511/519 5 Via Conn. Grand Junction-Farmington 6 30 10 16 515/509 3 Via Conn. Farmington					JACKSON, WYO. \$64.00 9 10 3 40 582/526 5 Via Conn. Denver Discontinued After May 31					CHEYENNE, WYO. \$11.00 6 41 7 18 41 0 10 24 12 41 561/6 1 Via Conn. Denver				
PHOENIX, ARIZ. \$54.00 7 Day Round Trip Fare \$56.00 6 10 10 35 570/511/519 5 Via Conn. Grand Junction-Farmington 6 30 10 16 515/509 3 Via Conn. Farmington					POWELL-CODY, WYO. \$38.00 6 30 10 23 4 C 4 7 40 10 10 516 P 3					KANSAS CITY, MO./KAN. (CST) \$73.00 9 10 2 55 582/560 4 Via Conn. Denver 4 06 9 20 592/568 2 Via Conn. Denver					COLORADO SPRINGS, COLO. (MDT) \$23.00 10 24 1 07 561/507 1 Via Conn. Denver 6 21 10 27 45/593 2 Via Conn. Denver				
TUCSON, ARIZ. \$85.00 30 Day Round Trip Fare \$123.00 9 00 3 21 501/507 6 Via Conn. Denver					RIVERTON, WYO. \$13.00 8 06 8 48 4 0 8 26 8 54 516 0					MINOT, N.D. (CST) \$90.00 9 10 3 32 582/508 5 Via Conn. Denver 4 06 11 37 592/510 3 Via Conn. Denver					DENVER, COLO. (MDT) \$18.00 6 41 9 05 41 1 10 24 12 04 561 0 6 21 8 44 45 1 9 35 11 15 563 0				
WOLF POINT, MONT. \$53.00 10 40 4 48 512/34 6 Via Conn. Great Falls					SALT LAKE CITY, UTAH \$20.00 9 46 10 26 517 0 10 13 11 52 23 1					OMAHA, NEBR. (CST) \$67.00 9 10 3 11 582/566 5 Via Conn. Denver 4 06 10 02 592/564 5 Via Conn. Denver					GRAND ISLAND, NEBR. (CST) \$26.00 6 54 9 10 562 1 6 40 8 56 564 1				
WORLAND, WYO. \$33.00 6 30 9 46 4 3 7 40 9 40 516 2										PHOENIX, ARIZ. \$30.00 10 41 5 00 591/589 4 Via Conn. Albuquerque 9 03 11 52 583 3					JACKSON, WYO. \$39.00 10 24 3 40 561/526 3 Via Conn. Denver Discontinued After May 31 6 41 12 17 41/530 2 Via Conn. Denver Effective June 1				



VACATIONLAND AREA FARES

Unlimited travel with confirmed reservations for 30 days anywhere on Frontier's system for only \$100. Transportation is available to all persons residing in states wholly east of the Mississippi River, plus the states of California, Oregon, Washington, Alaska and Hawaii. Tickets must be obtained at a point served by Frontier within 15 days after arrival by common carrier — not by private car.

